



# ASIA-PACIFIC INTERNATIONAL UNIVERSITY

A Truly International University











# WHY WE THINK AIU IS THE RIGHT PLACE FOR YOU



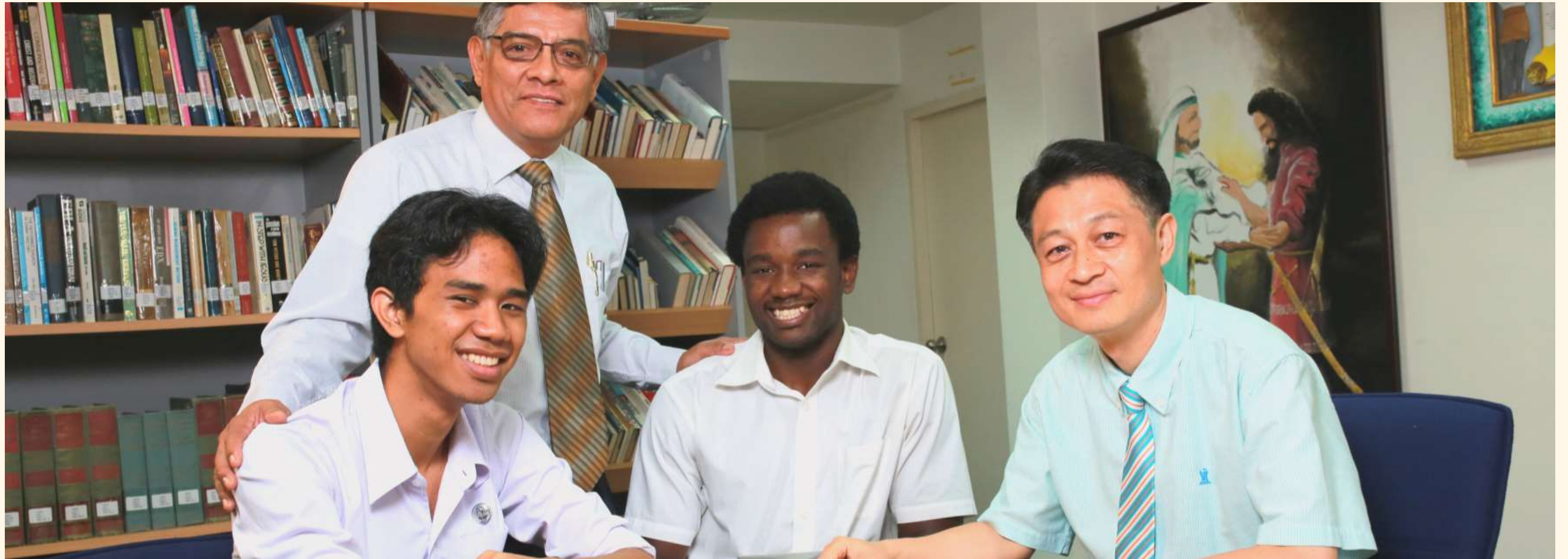
**International Teachers  
and Professors**



**Culturally Diverse  
Community**



**Wholistic Education**



# INTERNATIONAL TEACHERS & PROFESSORS

A teacher-student ratio of 1:9 to help you and every student succeed. Professors have earned degrees from 30+ countries to give you broad exposure to teaching and learning experiences.





# CULTURALLY DIVERSE COMMUNITY

Through cultural diversity in the classroom and social interactions, students in the multicultural environment can learn from different cultural backgrounds and upbringings. Research shows that diversity in the students prepares students for the workforce in a multicultural environment; it fosters mutual respect and teamwork.



# WHOLISTIC EDUCATION

The University's goal and mission are to prepare and develop a whole person mentally, physically, socially, and spiritually. The curriculum, activities, programs, and events are all prepared to make you a well-rounded person.

# PROGRAMS OF STUDY



- Bachelor of Business Administration (Accounting)
- Bachelor of Business Administration (Management)
- Bachelor of Science in Information Technology
- Bachelor of Science in Bioscience
- Bachelor of Science (Public Health)
- Bachelor of Science (Clinical Lab Science)
- Bachelor of Arts in Christian Studies
- Bachelor of Arts in English (TESOL)
- Bachelor of Arts in English (Communication)
- Bachelor of Arts in English (Business)
- Bachelor of Arts in Teaching
- Bachelor of Nursing (International Program)

# BACHELOR OF SCIENCE IN INFORMATION TECHNOLOGY

**A Program designed to prepare students to meet the challenges of IT utilization in the business environment**

The BSc. in Information Technology is concerned with the information that computer systems can provide to aid a company, non-profit or governmental organization in defining and achieving its goals.



# GRADUATES BECOME...



Programmer



Systems Analyst



Network Admin

# BACHELOR OF ARTS IN CHRISTIAN STUDIES

Students learn about theology from a distinctly Asian viewpoint. International instructors and multicultural classrooms prepare students to work in diverse multiethnic environments.



# GRADUATES BECOME...

- Evangelist
- Youth Pastor
- Teacher
- Chaplain
- and more...

 ASIA-PACIFIC  
INTERNATIONAL UNIVERSITY

**ALUMNI  
SPOTLIGHT**

Rachael Pang

Class of 2019  
FACULTY OF RELIGIOUS STUDIES

**CURRENT POSITION**

**Assistant Chaplain**  
at Penang Adventist Hospital



 ASIA-PACIFIC  
INTERNATIONAL UNIVERSITY

**ALUMNI  
SPOTLIGHT**

Pr. Tan Weoi Siong

Class of 2008  
FACULTY OF RELIGIOUS STUDIES

**CURRENT POSITION**

**Church Pastor**  
at Peninsular Malaysia Mission



 ASIA-PACIFIC  
INTERNATIONAL UNIVERSITY

**ALUMNI  
SPOTLIGHT**

Davied Zebedeus

Class of 2018  
FACULTY OF RELIGIOUS STUDIES

**CURRENT POSITION**

**Church Pastor**  
at Upper Room SDA Church, Indonesia



# BACHELOR OF ARTS IN ENGLISH

## Areas of Emphasis:

- Teaching English to Speakers of other languages (TESOL)
- English for Communication
- English for Business





# GRADUATES BECOME...



## TESOL

Teacher  
School Manager  
University Lecturer

## English for Communication

Writer  
Communication Manager  
Public Relation Officer

## English for Business

Office Manager  
Sales Officer  
Communications Officer

# BACHELOR OF ARTS IN TEACHING

Our program is designed to nurture, grow and train the educators and leaders of tomorrow.



# GRADUATES BECOME...

- Teachers
- Editors
- Professional Counselors
- and more...

 ASIA-PACIFIC  
INTERNATIONAL UNIVERSITY

**ALUMNI  
SPOTLIGHT**

**Daneth Ka**

Class of 2009  
FACULTY OF EDUCATION

**CURRENT POSITION**

**Instructor**  
at Cambodia Adventist School



 ASIA-PACIFIC  
INTERNATIONAL UNIVERSITY

**ALUMNI  
SPOTLIGHT**

**Jidi Mois**

Class of 2019  
FACULTY OF EDUCATION

**CURRENT POSITION**

**Elementary Teacher**  
at SRA Bambang, Malaysia



# BACHELOR OF BUSINESS ADMINISTRATION

## Areas of Emphasis:

- Accounting
- Management



# GRADUATES BECOME...

- Accountants
- Financial Controllers/Managers
- Business Owners
- Sales Manager
- and more...

ASIA-PACIFIC  
INTERNATIONAL UNIVERSITY

## ALUMNI SPOTLIGHT

Ngin Pechrachana

CLASS OF 2015  
Faculty of Business Administration

CURRENT POSITION

**Senior Accountant**  
at Cambodia Adventist Mission in Cambodia.



ASIA-PACIFIC  
INTERNATIONAL UNIVERSITY

## ALUMNI SPOTLIGHT

Saksith Inthavong

CLASS OF 2019  
Faculty of Business Administration

CURRENT POSITION

**Marketing & Communication Officer** (Banque Franco Lao)  
**Creative Director** (LA-PLAYGROUND)



ASIA-PACIFIC  
INTERNATIONAL UNIVERSITY

## ALUMNI SPOTLIGHT

Khin Myet Thwe Hnin

Class of 2019  
FACULTY OF BUSINESS ADMINISTRATION

CURRENT POSITION

**Strategic Insight Planner**  
at Mango Advertising Company, Myanmar



ASIA-PACIFIC  
INTERNATIONAL UNIVERSITY

## ALUMNI SPOTLIGHT

Pattarathida Janrawangyot

CLASS OF 2019  
Faculty of Business Administration

CURRENT POSITION

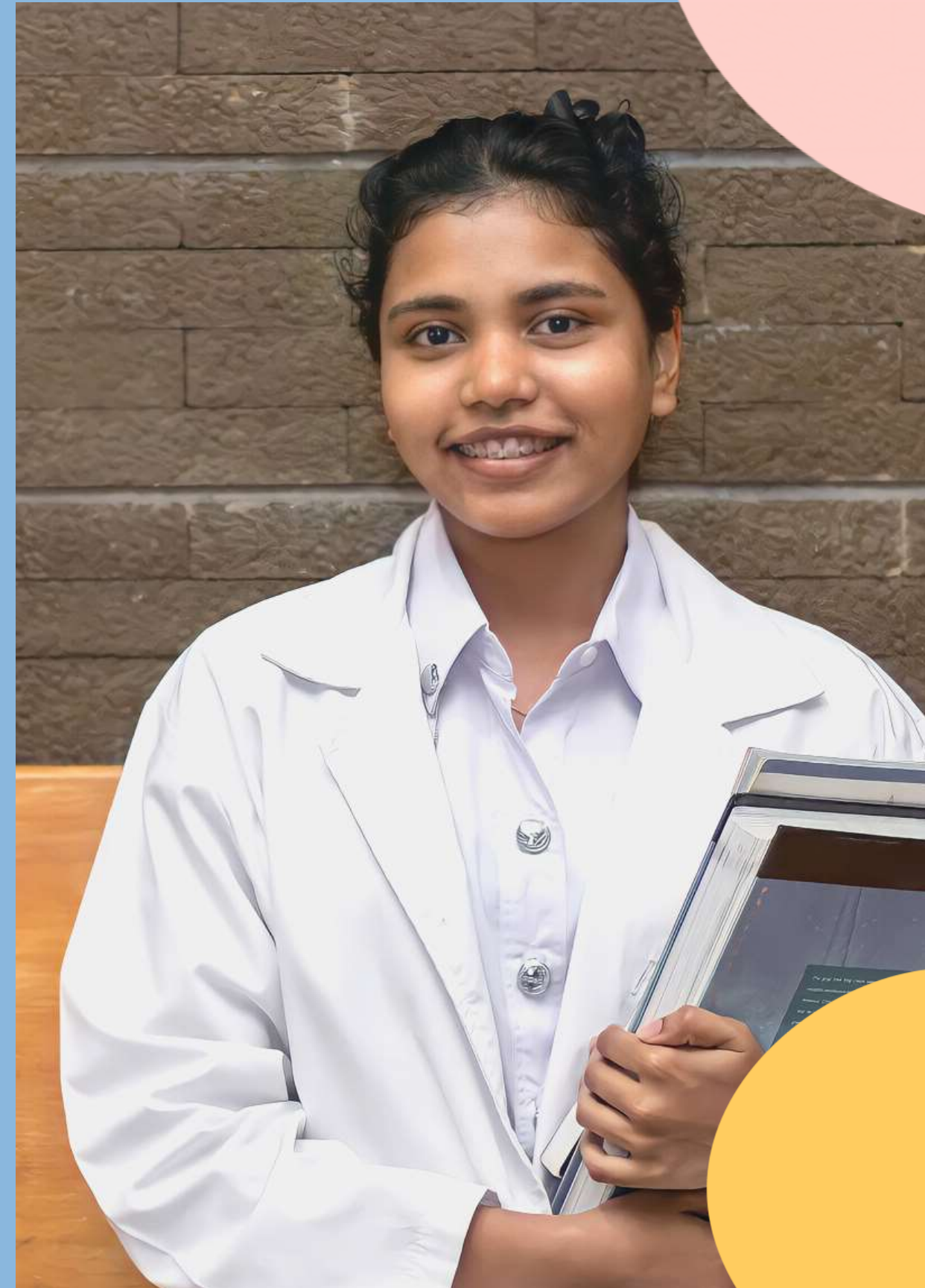
**Accounting Consultant**  
at Mazars (Thailand) Ltd.



# BACHELOR OF SCIENCE IN BIOSCIENCE

**The BSc. in Bioscience comes with international transfer options for:  
Pre-medicine & Pre-engineering\***

One Degree (B.Sc. in Bioscience) from AIU. Or a Dual-Degree (B.Sc. in Biology) from La Sierra University (2+2 program).



# GRADUATES BECOME...

- Health Care Professional
- Health Administrator
- Public Health Officer
- Science Educator
- and more...

 ASIA-PACIFIC  
INTERNATIONAL UNIVERSITY

**ALUMNI  
SPOTLIGHT**

Rehema Liyai

Class of 2015  
FACULTY OF SCIENCE

**CURRENT POSITION**

**Graduate Student Research Assistant**  
at United States Medical Research Directorate, Kenya



 ASIA-PACIFIC  
INTERNATIONAL UNIVERSITY

**ALUMNI  
SPOTLIGHT**

Dr. Min Min Tan

Class of 2006  
FACULTY OF SCIENCE

**CURRENT POSITION**

**Public Health Researcher**  
at Monash University Malaysia



# BACHELOR OF SCIENCE

## EMPHASIS IN PUBLIC HEALTH

Our Public Health students will learn, build, and grow in their understanding and skills to apply scientific principles and concepts, think critically, and integrate concepts and ideas from various disciplines during the four-year program.





# GRADUATES BECOME...

Listen to how our  
departments  
ensured workplace  
diversity



Nutritionist



Epidemiologist



Environmental Health  
Specialist

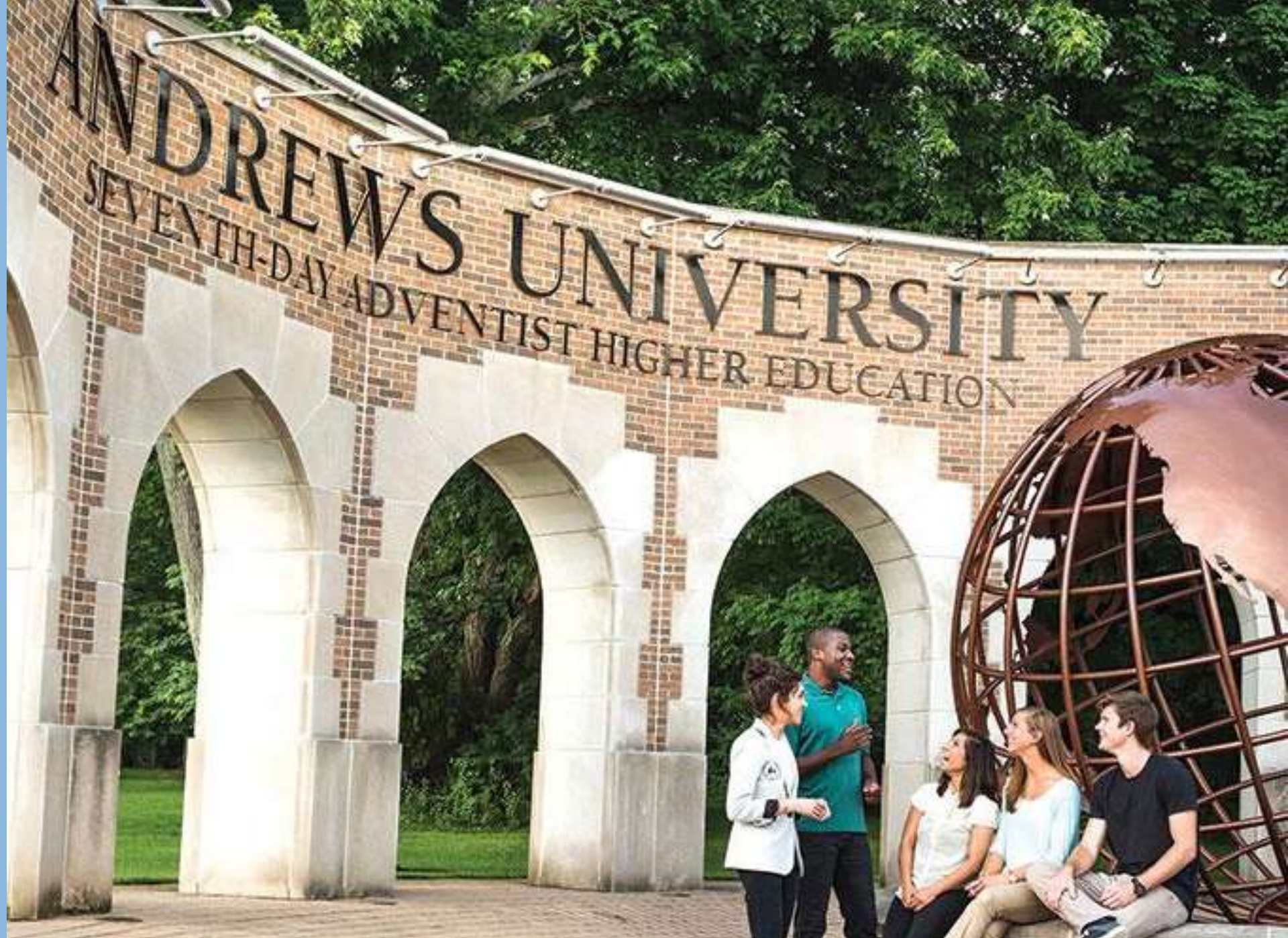
# BACHELOR OF SCIENCE

## EMPHASIS IN CLINICAL LAB SCIENCE

Graduates find job opportunities at:

- Hospitals or Clinics as Nutritionists
- Forensic or Public Health Laboratories
- Biotechnology companies
- Veterinary Clinics
- Research Institutions





# **PARTNERSHIP PROGRAMS WITH LA SIERRA UNIVERSITY AND ANDREWS UNIVERSITY**

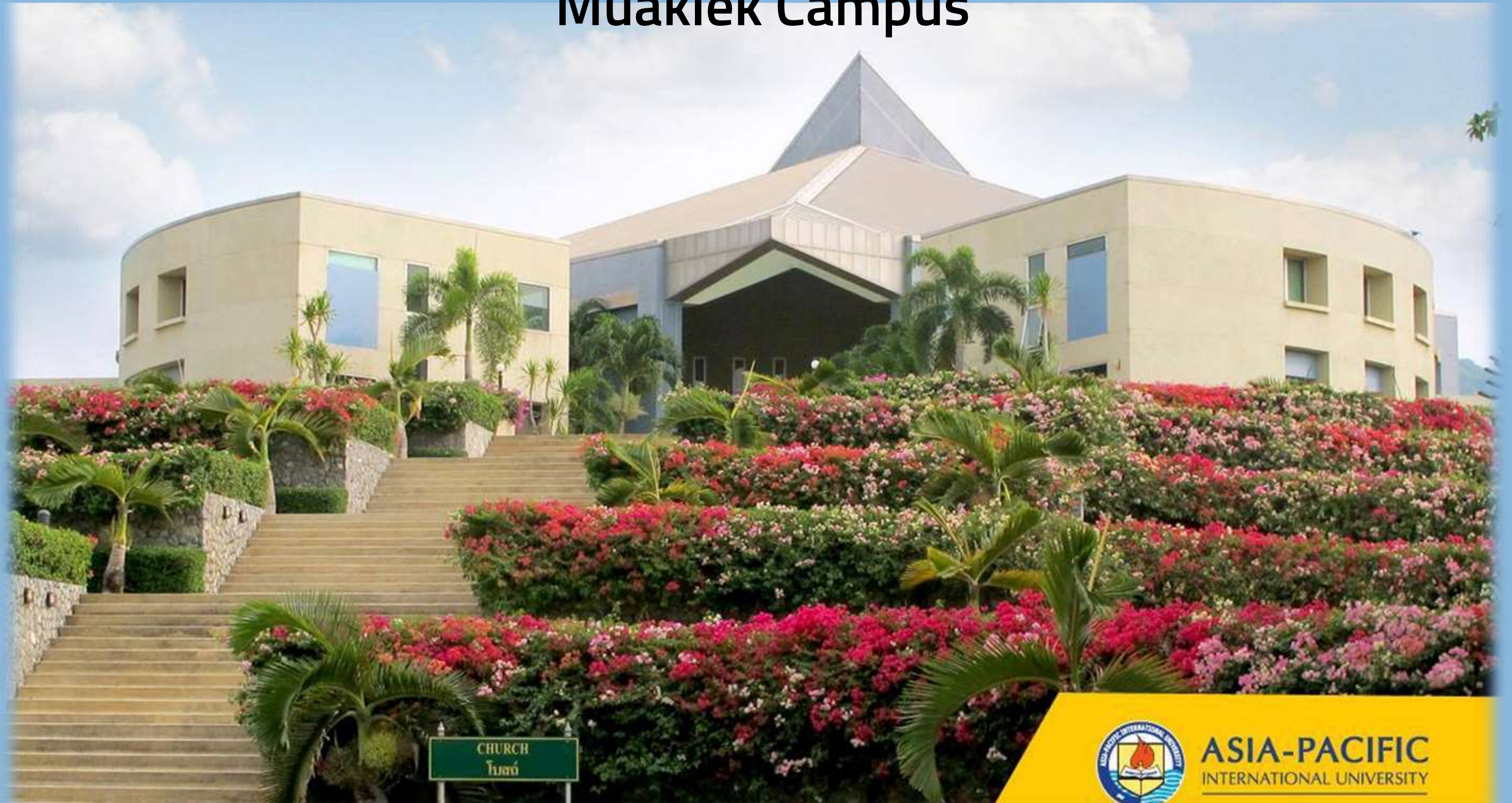
2+2 partnership degree for the Bioscience Program. Students can do one or two years at AIU for the rest of the programs and complete their degrees in partnership universities. And gain considerable savings in tuition fee costs of American universities.

# BACHELOR OF NURSING

Our international nursing students will grow in ethical values; knowledge, research, and innovation; skills in professional nursing and competencies of the 21st century; and caring based on the Neuman's System Model for and individual, a family, and a community with multicultural status.



# Church , Asia-Pacific International University Muaklek Campus



**ASIA-PACIFIC**  
INTERNATIONAL UNIVERSITY

# Mission Faculty of Nursing , Bangkok Campus

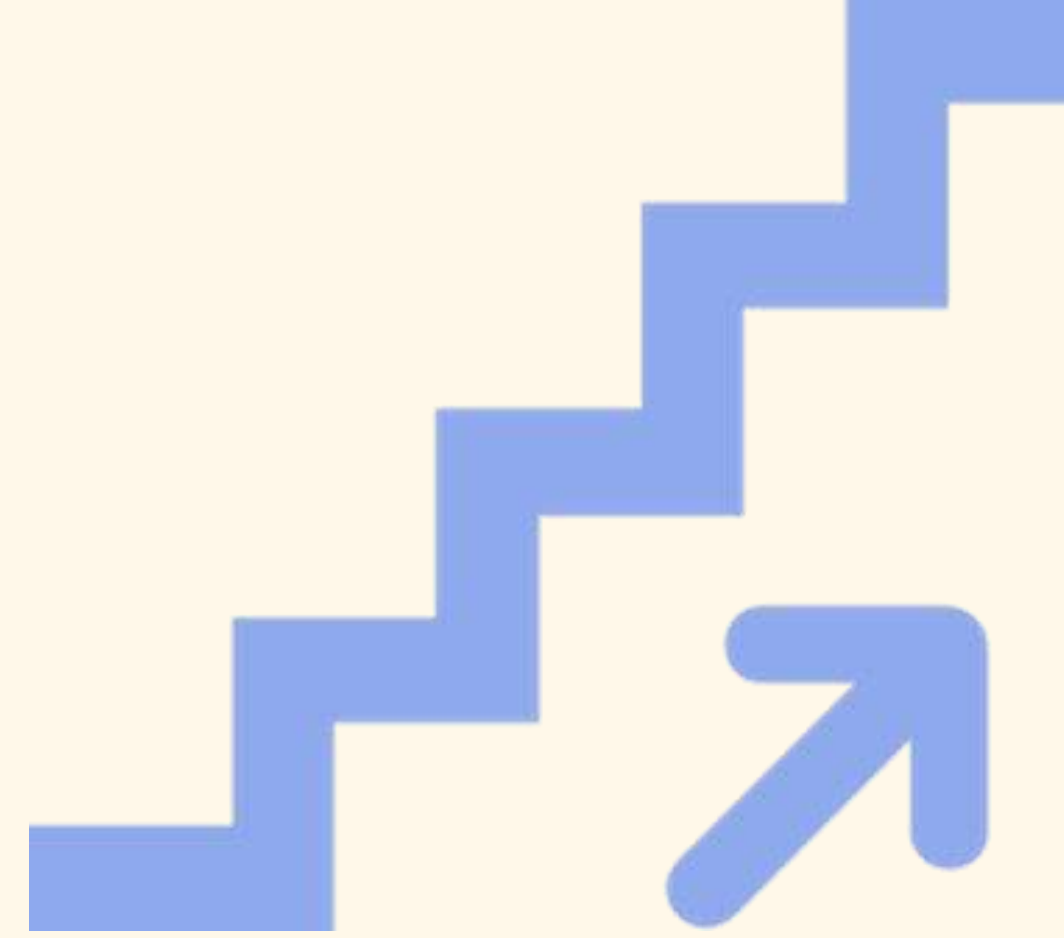


# Nursing clinical & Simulation Laboratory



English as a Second  
Language

**ESL**



What you will learn?

Listening Skill



Speaking Skill



Reading Skill



Writing Skill



Grammar

Join this program if you would  
like to...

- Improve your English skills
- Study in college courses
- Study abroad



# GRADUATE DEGREES



## Master of Business Administration:

- Accounting
- Management

## Master of Education:

- Curriculum & Instruction
- Educational Administration
- Teaching English to Speakers of Other Languages (TESOL)

# PROGRAMS & ACTIVITIES

Most of the students reside on the campus in the dormitories. Therefore, the University has a vibrant social life with events such as Cultural Festival to celebrate cultural diversity at AIU.



There are sufficient programs and events to strengthen social bonding and interaction among students. And to create a memorable university life experience for the students to remember all their life.





# WELCOME BACK PARTY





# UNIVERSITY CULTURAL FEST





# COMMUNITY SERVICE



# Volunteer Camp





# GRADUATION CEREMONY

# Fees Structure

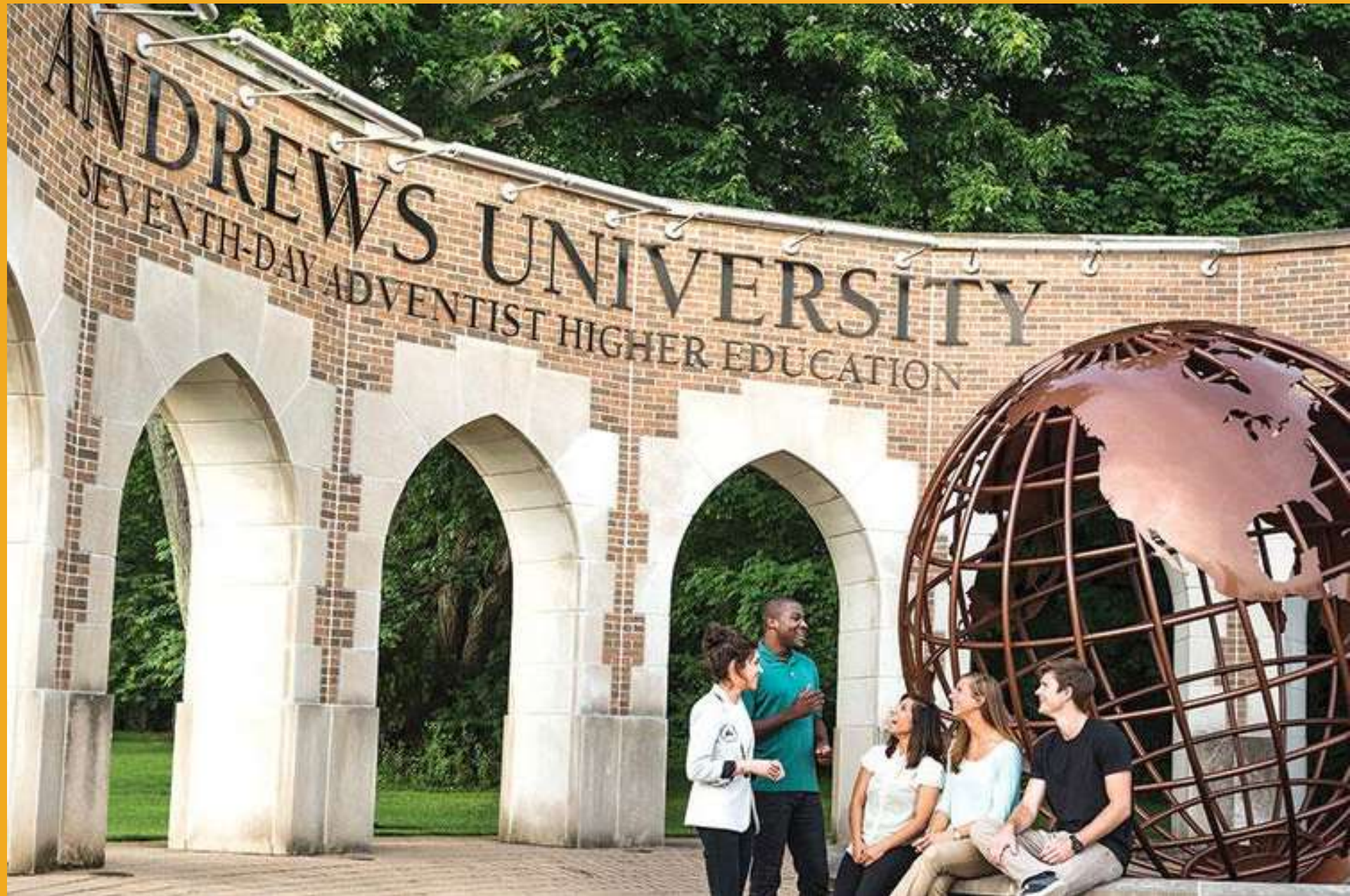
**135,000 BAHT/  
\$4,300 PER YEAR**

The fees structure includes room and board. The tuition & fees cost is approximately 135,000 Baht/\$4,300 per year. An additional summer school tuition and fees are approximately 24,500 Baht/\$800

# FEE INFORMATION

The cost does not include one-time payments such as: registration fee (2250 THB), damage deposit (2,000 THB); and an annual fee for VISA (6,500 THB/year)

<b>Details</b>	<b>1st Semester</b>	<b>2nd Semester</b>	<b>Summer</b>
Tuition	33,900	33,900	13,560
Regular Fees	14,250	14,250	4,500
Dormitory	8,000	8,000	2,600
Cafeteria	11,000	11,000	3,600
<b>Total</b>	<b>67,150</b>	<b>67,150</b>	<b>24,260</b>



# PARTNERSHIP PROGRAM

Partnership Program with LU and AU, comparative fees structure, indicates that you can save 60% plus in tuition and fees costs. Going through AIU to partnering institutions to complete the degree, LU offers a 50% partnership scholarship on tuition fees and AU \$14,000 per year.

# TRANSFER OPTIONS



**Asia-Pacific International University + La Sierra University**

# FEE INFORMATION (PLAN A)

<b>Details</b>	<b>AIU (4 Years)</b>	<b>AIU + La Sierra</b>	<b>La Sierra (4 Years)</b>
Tuition	\$10,848	\$38,004	\$130,320
Regular Fees	\$4,291	\$9,686	\$15,080
Dormitory	\$2,480	\$10,540	\$18,600
Cafeteria	\$3,413	\$9,657	\$15,900
<b>Total</b>	<b>\$21,032</b>	<b>\$67,887</b>	<b>\$179,900</b>

\*The fee does not include one-time registration fees, damage & foreign student travel deposit (refundable), yearly VISA fee, lab fees and education activities fees. Amounts are subject to change with exchange rates.

\*\*The fee includes general and international fees, but does not include the School of Business Fee (\$150/year). The meal plans includes 10 meals/week (330 meals/year).

# TRANSFER OPTIONS



**Asia-Pacific International University + Andrews University**



# FEE INFORMATION (PLAN A)

<b>Details</b>	<b>AIU (4 Years)</b>	<b>AIU + Andrews</b>	<b>Andrews (4 Years)</b>
Tuition	\$10,848	\$35,408	\$115,968
Regular Fees	\$4,291	\$4,478	\$4,664
Dormitory	\$2,480	\$11,040	\$19,600
Cafeteria	\$3,413	\$9,107	\$14,800
<b>Total</b>	<b>\$21,032</b>	<b>\$60,033</b>	<b>\$155,032</b>

\*The fee does not include one-time registration fees, damage & foreign student travel deposit (refundable), yearly VISA fee, lab fees and education activities fees. Amounts are subject to change with exchange rates.

\*\*The fee does not include the international student deposit (\$3,000) which is required as part of the I-20 application process. Students must also pay a nonrefundable international student fee of \$100 (for total of \$3,100) before an I-20 is issued.

# NEW STUDENT SCHOLARSHIP

Apply for the 10,000 Baht  
AIU New Students Scholarship.  
Requirements: Apply online through  
[www.apiu.edu](http://www.apiu.edu)  
and submit the documents before  
March, 2023.



# STUDENT WORK PROGRAM



**36 - 54 Baht / Hour**

University provides work opportunities to enable students to help finance their studies.

Work opportunities, however, are limited and in granting work assignments preference will be given to students who need work as part of their financial plan. The amount of work assigned depends on the student's financial need as well as class load and academic performance.

# HOW TO APPLY

**1**

Apply online at [www.apiu.edu](http://www.apiu.edu) and submit all required documents.

**2**

When documents have been received and approved, an advance foreign student travel deposit will be requested.

**3**

When financial arrangements are been approved, a letter of acceptance will be mailed for student visa.

\*Applicants are expected to have satisfactorily completed high school.

\*\*Applicants should take English Proficiency test (TOEFL, IELTS, or University English Exam)

# CONTACT US



+66 36 720 777



[www.apiu.edu](http://www.apiu.edu)



@apiu.edu



@MyAsiaPacific



**ASIA-PACIFIC**  
INTERNATIONAL UNIVERSITY