

Tzu Chi University

Since 1994



花蓮最寬廣的視野



TCU Introduction Vedio (5 mins) English version : <https://reurl.cc/RyIGYn>

TCU- Tzu Chi University Introduction 2022 #TCU#tcu#studyintaiwan#studyabroad#tzuchiuniversity#taiwan



Dream Big and Fly High With Tzu Chi University

0:00 / 5:06



TCU AT A GLANCE



TOP 10 IN ASIA
(UNIVERSITY IMPACT
RANKINGS IN 2019)

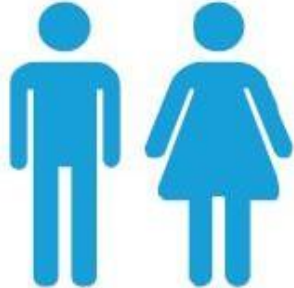


6 COLLEGES



MORE THAN
47+
PROGRAMS

For foreign students
24 UNDERGRADUATE PROGRAMS
21 GRADUATE PROGRAMS
2 DOCTORAL PROGRAMS



5500+
STUDENTS



APPROXIMATELY
350
INTERNATIONAL
STUDENTS



18,000+
ALUMNI



350+
STUDENTS
STUDY ABROAD



3 CENTRES OF
INNOVATION

RESEARCH CENTER FOR GLOBAL SDGs CHALLENGES
MEDIA PRODUCTION AND EDUCATION CENTER
MEDICAL SIMULATION CENTER

As of 2020

TZU CHI AT A GLANCE

4 MISSIONS

CHARITY
MEDICINE
EDUCATION
CULTURE



110,000+ VOLUNTEER MEMBERS



SET UP OFFICES

66

COUNTRIES
AND
REGIONS



BROUGHT AID

119

COUNTRIES
AND
REGIONS



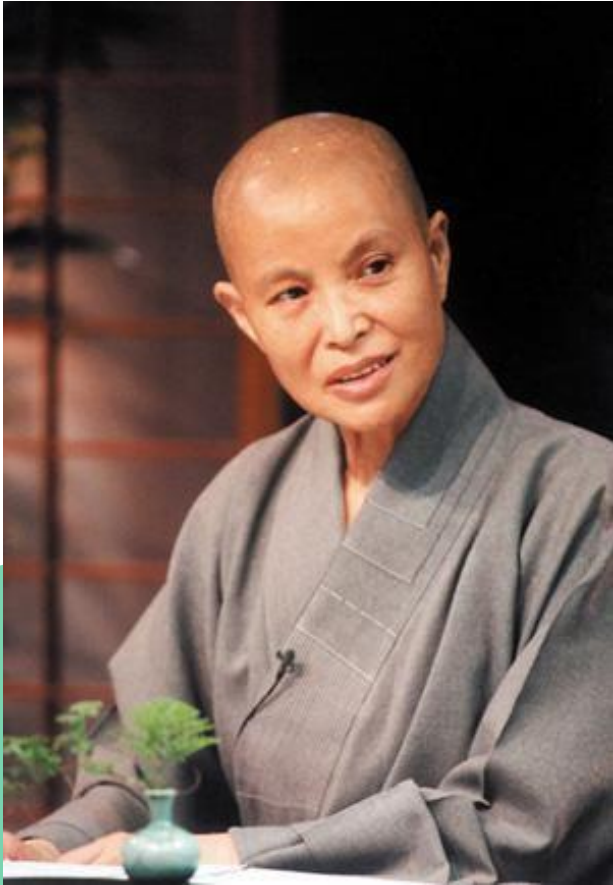
SHIPPED PANDEMIC RELIEF SUPPLIES

87

COUNTRIES
AND
REGIONS



As of 2020



Founder
Dharma Master Cheng Yen



1986 Tzu Chi Medical
Center



1989 Tzu Chi University
of Science &
Technology
(TCUST)



1994 Tzu Chi University
(TCU)



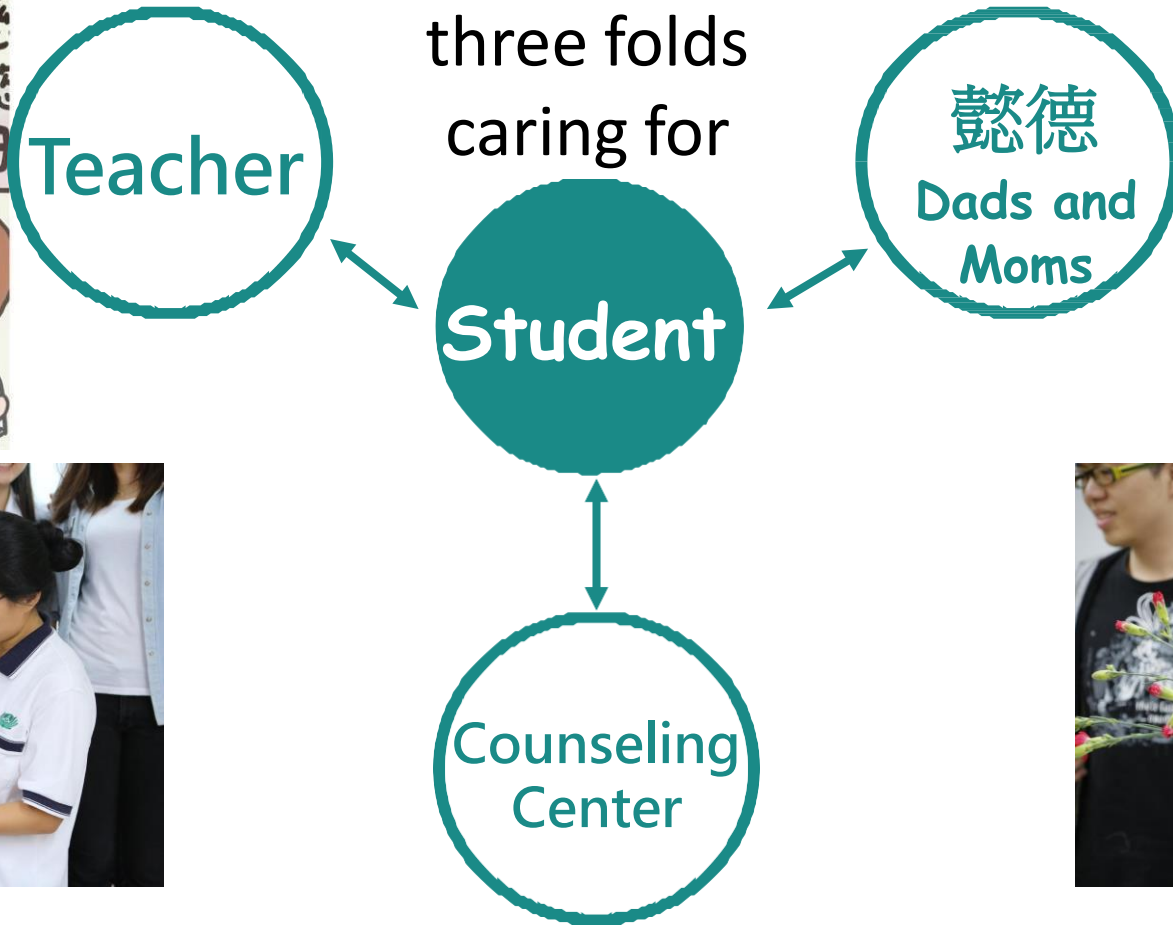
School Mottos

Kindness, Compassion, Joy, Unselfish Giving





Tzu Cheng / Yi Te (懿德爸媽) Association Volunteer Dads and Moms



Tzu Chi's Medical System

- Hualien Tzu Chi Medical Center
- Taipei Tzu Chi Medical Center
- Yuli Tzu Chi Hospital
- Kuanshan Tzu Chi Hospital
- Taichung Tzu Chi Hospital
- Douliu Tzu Chi Hospital
- Dalin Tzu Chi Hospital
- Sanyi Tzu Chi Chinese Medicine Hospital



Tzu Chi Culture & Communication Foundation

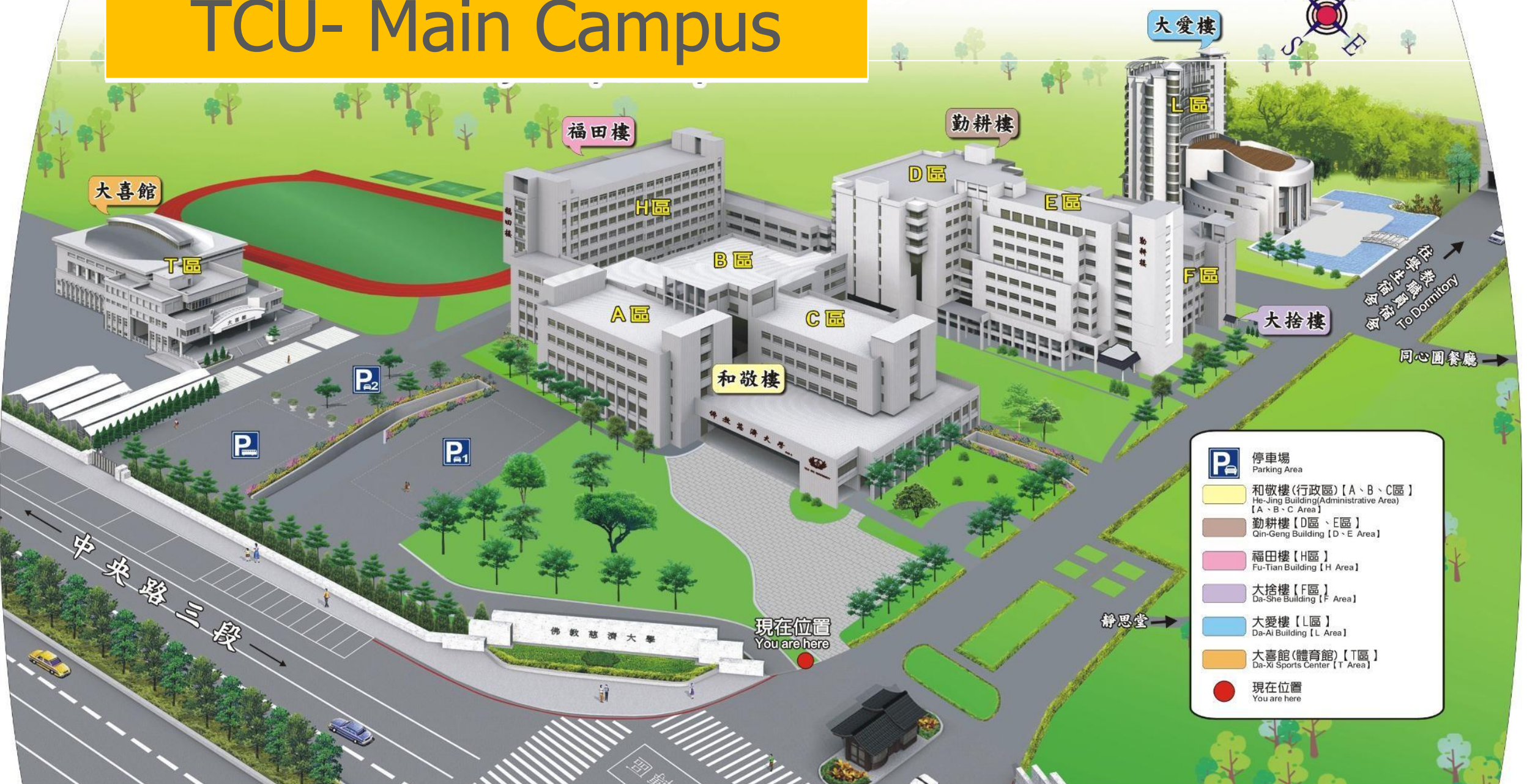
Da Ai TV
Da Ai e-Radio
Publications



DaAi
Television



TCU- Main Campus



| | |
|--|---|
| | 停車場 Parking Area |
| | 和敬樓(行政區) [A、B、C區] He-Jing Building (Administrative Area) [A - B - C Area] |
| | 勤耕樓 [D區、E區] Qin-Geng Building [D - E Area] |
| | 福田樓 [H區] Fu-Tian Building [H Area] |
| | 大捨樓 [F區] Da-She Building [F Area] |
| | 大愛樓 [L區] Da-Ai Building [L Area] |
| | 大喜館(體育館) [T區] Da-Xi Sports Center [T Area] |
| | 現在位置 You are here |

大喜館

T區

P2

P

P1

福田樓

H區

B區

A區

C區

和敬樓

勤耕樓

D區

E區

大愛樓

L區

F區

大捨樓

命誠樓
命誠加蓋樓
To Dormitory

同心圓餐廳

靜思堂

現在位置
You are here

佛敎慈濟大學

中央路三段

TCUST - Jianguo Campus



Academics



College Of Medicine

College of Humanities and Social Sciences

College of Education and Communication

International College

College of Nursing

College of Health Technology and Management



| Courses at TCU Main Campus & Jieren Campus | | BSc/BEng | MSc | PhD |
|---|--|-----------------|------------|------------|
| College of Medicine | School of Medicine | ● | | |
| | Department of Nursing | ● | ● | |
| | Department of Public Health | ● | ● | |
| | Department of Laboratory Medicine and Biotechnology | ● | ● | |
| | Department of Medical Informatics | ● | ● | |
| | Department of Physical Therapy | ● | ● | |
| | Department of Biomedical Science & Engineering | ● | ● | |
| | Department of Molecular Biology and Human Genetics | ● | ● | |
| | School of Post-Baccalaureate Chinese Medicine | ● | | |
| | Institute of Medical Sciences | | | ● |
| | Master Program in Biomedical Sciences, School of Medicine | | ● | |
| | Master Program in Pharmacology and Toxicology, School of Medicine | | ● | |
| Ph.D. Program in Pharmacology and Toxicology, School of Medicine | | | ● | |

| Courses at TCU Main Campus & Jieren Campus | | BSc/BEng | MSc | PhD |
|--|---|----------|-----|-----|
| College of Humanities and Social Sciences | Department of Social Work | | | |
| | Department of Human development studies and Psychology | • | • | |
| | Dept of Oriental Language and Literature | • | • | |
| | Institute of Religion and Humanity | | • | |
| College of Education and Communication | Department of Communication Studies | • | • | |
| | Department of Child Development and Family Studies | • | | |
| | Institute of Education | | • | |
| International College | Department of Foreign Language and Literature | • | | |
| | Bachelor Program in International Service Industry Management | • | | |
| | Bachelor Program in Digital Media and Technology | • | | |

Programs conducted fully in English

DMT Introduction Video (1 mins 35 sec) : <https://reurl.cc/V4vlbb>

Ngành Khoa học kỹ thuật Truyền thông số Quốc tế chủ yếu



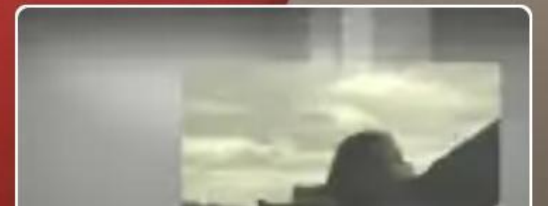
DMT program - Learning experience

vedio1(2.5mins): <https://reurl.cc/806xRM>

vedio2(4mins): <https://reurl.cc/WvZ75k>



⤴ 向上拉即可跳轉至精確的時間點



Courses at TCUST-Jianguo Campus

BSc/
BEng

MSc

| | | | |
|---|---|---|---|
| College of Nursing | <u>Department of Nursing</u> | ● | ● |
| | Graduate Institute of Long-term Care | | ● |
| | Department of Health Administration | ● | ● |
| College of Health Technology & Management | Department of Information Technology and Management | ● | ● |
| | Department of Medical Imaging and Radiological Sciences | ● | ● |
| | Department of Business Management | ● | ● |

Special for the TCUST Nursing Department
Chinese Proficiency certification

■ Shall pass the Chinese proficiency test and obtain the proficiency of TOCFL B2 there of before graduation.

| Semester | Chinese Level |
|---|--------------------|
| 1st semester of the first-grade | A1 or above |
| 2nd semester of the first-grade | A2 or above |
| 2nd semester of the second-grade | B1 or above |
| all the end of the second semester of the third-grade | B2 or above |

Programs conducted fully in Chinese or English

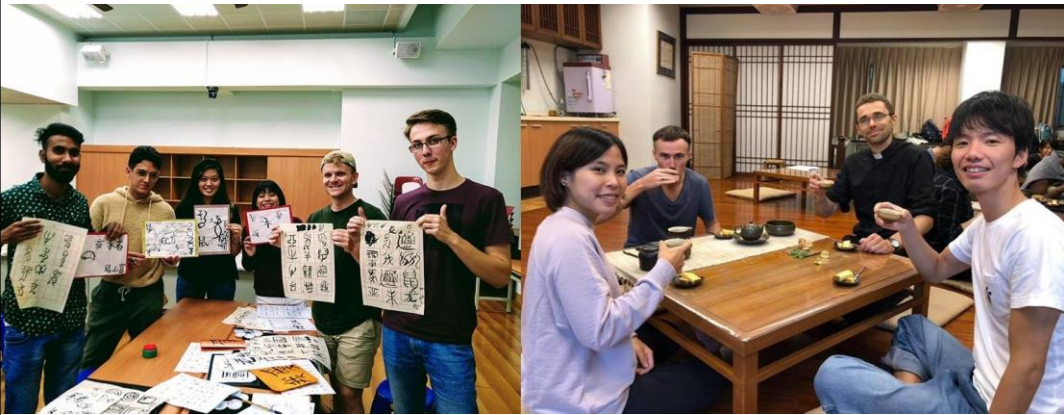
School Fees & Daily Meals Expenses

| 每學期學雜費 | | Tuition Fee and Incidental Expenses | | | |
|-----------|---|-------------------------------------|-----|-------------|-----------------|
| 學院 | College | 新臺幣 | NTD | 美元 | USD |
| 醫學院 | College of Medicine | 48,849~61,975 | | 1,630~2,065 | |
| 人文社會學院 | College of Humanities and Social Sciences | 44,125~46,831 | | 1,470~1,560 | |
| 教育傳播學院 | College of Education and Communication | 46,831~54,230 | | 1,560~1,810 | |
| 國際暨跨領域學院 | International College | 44,125~46,831 | | 1,470~1,560 | |
| 其他費用 | | Other Expenses | | | |
| 項目 | Items | 新臺幣 | NTD | 美元 | USD |
| 學生餐廳 / 每天 | Student Cafeteria / Day | 65(校本部) | | 2.2 | (Main Campus) |
| | | 91(人社院校區) | | 3 | (Jieren Campus) |
| 生活費 / 每月 | Living cost Month | 5,000~10,000 | | 170~350 | |
| 宿舍費 / 每學期 | Dormitory / Semester | 8,200 | | 275 | |

*備註：新臺幣兌換美元匯率大約是30新臺幣兌換1美元

*Remark: Exchange rate for 30 NTD = 1 USD

TCU Chinese Language Center



Chinese Language Center

THE KNOWLEDGEREVUE
Education. Innovation. Success.

Chinese Language Center
of Tzu Chi University
is recognized by The Knowledge Review Magazine in

10 MOST VALUABLE LANGUAGE SCHOOLS IN EAST ASIA 2019

An annual listing of the 10 Most Valuable Language Schools in East Asia, 2019, which are channeling their expertise towards delivering proficient language training courses to students across the globe.

Pragya B. Bhatnagar
Editor-in-Chief

TZU CHI UNIVERSITY
Where Language Comes to Life

Today, in the age of a communication revolution and internet globalization, it has become more common to hear of the need to educate inter-cultural, global citizens in order to nurture respect and build a sense of belonging. Language, regardless of any physical barrier, is the only tool and virtue which maintains a delicate balance between people from different cultures and our understanding of it.

The birth of **TZU CHI UNIVERSITY (TCU)**, one of the most prestigious universities in the world, stems from the wishes of its founder, **Disciple Master Cheng Yen**, dedicatedly serving her motto, *"May all minds be purified, may society be peaceful, and may there be no disaster in this world."* She institutionalized Tzu Chi University, comprising of the College of Medicine, College of Social Sciences and Humanities, College of Education and Communication, and the International College. The **TCU Chinese Language Center** is a part of the International College.

Since 25 years, the university followed the philosophy of raising the level of traditional and education, while inspiring students to be good deeds. TCU's sincere care/beliefs have become a global recognition, ranking 67th in the world and 1st in Taiwan, in the Times Higher Education University Impact Rankings in 2019. The university strives to and making the world a better place, particularly in acquiring professional knowledge and skills enhancing international perspectives and working with team spirit.

Origin of Tzu Chi
In 1966, Disciple Master established the Tzu Chi Foundation

Jingji Hall is the heart of the Tzu Chi Foundation and the heart of the world's Tzu Chi volunteer.

Tzu Chi University students receive ICAE (International Generically Engineered Academic Competition) award.

10 MOST VALUABLE LANGUAGE SCHOOLS IN EAST ASIA 2019

In Hualien, on the east coast of Taiwan. It originated in the remote Hualien area and expanded to all the five major continents of the world with chapters and offices in 60 countries and regions.

This Buddhist foundation practices the wisdom of relieving suffering, giving happiness, helping the poor, and educating the sick. Tzu Chi aids over 99 nations. Its volunteers selflessly contribute through a mindset of gratitude, expressing their sincerest care and support for each and every individual in need.

The increased demand for overseas volunteers from the Tzu Chi Foundation to learn Chinese led to the establishment of the Chinese Language Center in 2005. Since its establishment, Chinese language education and Chinese language teaching professional teacher training has remained the main objective of the center. The need of educational development has strengthened the center to promote various language education and international exchanges.

Tzu Chi's campus is among the most beautiful in Taiwan. It resides in the heart of Hualien, a beautiful metropolitan city into an cultural diversity. With a spacious campus filled with appealing greenery, Tzu Chi University provides well-equipped teaching facilities and a comfortable, graceful living environment. It nurtures various student associations and provide a wonderful research atmosphere.

The TCU Chinese Language Center collaborates with the Chinese language centers of six other well-known universities in Taiwan to write Modern Chinese textbooks. Modern Chinese is a textbook for learning Chinese. Modern Chinese followed the adherence to the CEFR (The Common European Framework of Reference for Languages), ACTFL (American Council on the Teaching of Foreign Languages), and TOCFL (Test of Chinese as a Foreign Language) as reference for the progression into the different levels of competence in the acquisition of the Chinese language. The Chinese language level of TCU Chinese Language Center students can be improved in a short period of time and communicated fluently with local people. The passing rate of the TOCFL test is close to 100%.

The TCU Chinese Language Center organizes Chinese language and culture intensive camps in conjunction with the long holidays of students from all over the world. Course content include intensive Chinese language courses, Chinese culture courses, outdoor visiting courses, and customized courses.

TCU Chinese language center strives to strengthen its foundation by creating a professional learning culture. It

Students from Tzu Chi University hold a clean beach event.

Students of the Chinese Language Center participate in the sports meeting of Tzu Chi University.

Culture Class — Chinese calligraphy and traditional Chinese painting.

Culture Class — Tea Ceremony.

October | 2019 | **KNOWLEDGEREVUE** | October | 2019

Is recognized by The Knowledge Review Magazine in the 10 Most Valuable Language School in East Asia 2019.

Chinese Language Center Tuition Fees

Mandarin Course (Regular class)

| Term | Class Duration | Tuition |
|-------------|-------------------------------|------------|
| Spring Term | March - May (12 wks) | NT\$36,000 |
| Summer Term | June - August(12 wks) | NT\$36,000 |
| Fall Term | September - November (11 wks) | NT\$33,000 |
| Winter Term | December - February (11 wks) | NT\$33,000 |

Other expenses and fees

* Registration fee NT\$500

* Administrative fee NT\$600

* Students who continue studying for a 3-month course, the tuition will be 10% off.

For tuition fee, please check with CHINESE LANGUAGE CENTER website:

<http://www.language.tcu.edu.tw/>

Chinese Language Center Tuition Fees

Online Course

| Time/tuition for one per hour | One on One | One on Two | One on Three (including more than three) |
|--|----------------------|-----------------------------|--|
| Taiwan Time 08:00-17:30 (Monday to Friday) | NTD\$700/ per hour | NTD\$440 /per one /per hour | NTD\$280 /per one/per hour |
| Taiwan Time 06:00-08:00、17:30-22:30 (Monday to Friday) Taiwan Time 06:00-22:30 (Saturday) | NTD\$1,000/ per hour | NTD\$650 per one /per hour | NTD\$400 /per one/per hour |

* Other Fees

New Student Registration Fee: NT\$500

Administrative Fee: NT\$600

Teaching Material fee: NTD\$1,000

* Students who are related to Tzu Chi Organization can get 10% discount for the following courses.
(One on one course - 35 hours/Two on one course - 55 hours /Three on one - 86 hours)

* A course should include at least 20 hours of class.

外國學生 International Students



- **TCU Introduction Video (5 mins)** : <https://reurl.cc/RylGYn>
- **【International Student Activity】** <https://www.youtube.com/@studyintcu990>
- Vietnamese Student -阮氏紅兒- Experience Sharing <https://reurl.cc/rr3WKr>
- Tastes of Africa 非洲文化節活動 <https://reurl.cc/lgNKG9>
- 烏克蘭文化節活動 Ukrainian Cultural Festival <https://reurl.cc/13XRjQ>

Undergraduate Courses - Fall 2024 & Spring 2025 Application

Online Applications:

Courses at Main campus & Jieren Campus (TCU)

Fall 2024 (enrolled in Sept)

1st period: Nov 22, 2023 – Mar 4, 2024

2nd period: Feb 26 – May 27, 2024

3rd period: May 20 – July 12, 2024

Spring 2025 (enrolled in Feb)

Aug 1st – Nov 13, 2024

Courses at Jianguo Campus (TCUST)

Fall 2024 (enrolled in Sept)

1st period : Oct 12, 2023 ~ Jan 5, 2024

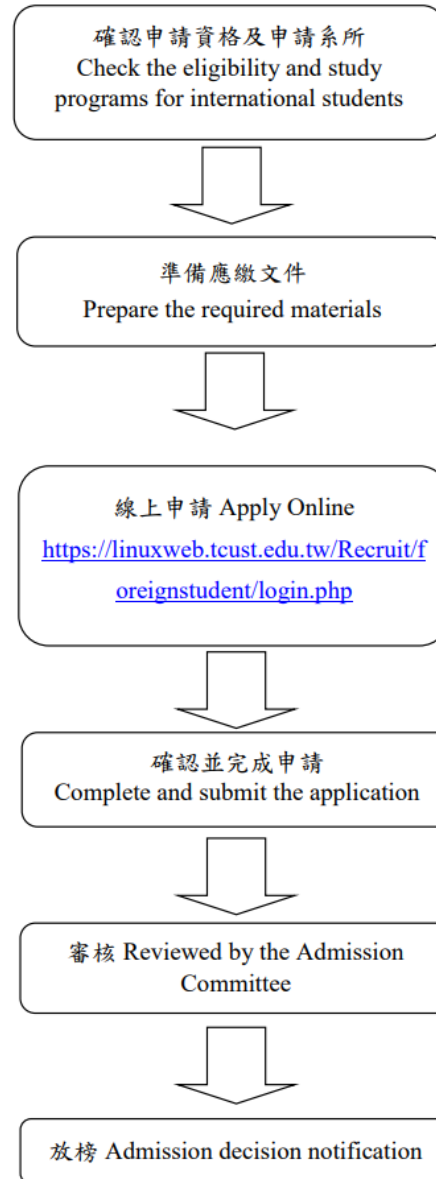
2nd period : Jan 8 ~ May 3, 2024

3rd period : May 6 ~ Aug 16, 2024

Spring 2025 (enrolled in Feb)

Oct 7, 2024 ~ January 3, 2025

Application Procedure for International Students



Courses at Jianguo Campus

線上申請 Apply Online

<https://reurl.cc/YVop74>

Courses at Main campus
& Jieren Campus

線上申請 Apply Online

<https://reurl.cc/QeoG10>

Admission Application For International Students

Websites & Guidelines



Courses at
Main
campus &
Jieren
Campus

http://www.enroll.tcu.edu.tw/?page_id=5125



Courses at
Jianguo
Campus

<https://reurl.cc/orV90j>



Chinese
Language
Center

<http://www.language.tcu.edu.t>



2024/25
Open Programs

2024/2025 Open Programs For Bachelor Degrees at TCU

| Courses at Main campus & Jieren Campus (TCU) | Department/ Institute/ Program | Enrollment Semesters | | | |
|---|--|-----------------------|------|------|----------------|
| | | Fall 2024 application | | | Spring 2025 |
| | | 1st | 2nd | 3rd | |
| College of Medicine | School of Medicine | open | - | - | - |
| | Post-Baccalaureate School of Chinese Medicine | open | - | - | - |
| | Department of Laboratory Medicine and Biotech. | open | open | open | - |
| | Department of Public Health | open | open | open | open |
| | Department of Nursing | open | open | open | - |

2024/2025 Open Programs
For Bachelor Degrees at TCU

| Courses at Main campus & Jieren Campus (TCU) | Department/ Institute/ Program | Enrollment Semesters | | | |
|---|--|-----------------------|------|------|----------------|
| | | Fall 2024 application | | | Spring 2025 |
| | | 1st | 2nd | 3rd | |
| College of Medicine | Department of Medical Informatics | open | open | open | - |
| | Department of Physical Therapy | open | open | open | - |
| | Department of Biomedical Sciences and Engineering | open | open | open | open |
| | Department of Molecular Biology and Human Genetics | open | open | open | open |

Open Programs For Bachelor Degrees at TCU

| Courses at Main campus & Jieren Campus (TCU) | Department/ Institute/ Program | Enrollment Semesters | | | |
|--|--|-----------------------|-------------|-------------|----------------|
| | | Fall 2024 application | | | Spring 2025 |
| | | 1st | 2nd | 3rd | |
| College of Education | Dept of Child Development and Family Studies | open | open | open | open |
| | <i>Department of Social Work</i> | <i>open</i> | <i>open</i> | <i>open</i> | <i>open</i> |
| College of Humanities and Social Sciences | Dept of Human Development and Psychology | open | open | open | open |
| | <i>Department of Oriental Languages and Literature</i> | <i>open</i> | <i>open</i> | <i>open</i> | <i>open</i> |
| | | | | | |

Open Programs
For Bachelor Degrees at TCU

| Courses at Main campus & Jieren Campus (TCU) | Department/ Institute/ Program | Enrollment Semesters | | | |
|---|---|-----------------------|------|------|----------------|
| | | Fall 2024 application | | | Spring 2025 |
| | | 1st | 2nd | 3rd | |
| Interna- tional College | Department of Foreign Languages and Literatures | open | open | open | open |
| | Bachelor Program in Digital Media and Technology | open | open | open | open |

Open Programs
For Bachelor Degrees at TCUST-Jianguo Campus

| Courses at Jianguo Campus (TCUST) | Department | Enrollment Semesters | | | |
|--|--|-----------------------|--------------------------|------------------------------|-------------------------------------|
| | | Fall 2024 application | | | Spring 2025 |
| | | 1st | 2nd | 3rd | |
| College of Nursing | Department of Nursing | all open | all open | all open | All open |
| | Department of Medical Imaging and Radiological Sciences | 12 Oct 2023 | 8 Jan ~ 3 May 2024 | 6 May ~ 16 Aug 2024 | 7 Oct 2024 ~ 3 Jan 2025 |
| College of Health Technology and Management | Department of Health Administration | ~ 5 Jan 2024 | | | |
| | Department of Business Management | | | | |
| | Department of Information Technology and Management | | | | |

Requirement for Language Proficiency

| Tzu Chi University (TCU) | Requirement for Language Proficiency Test Cert. | |
|---|---|--|
| | Chinese (Cert. of either one) | English (Cert. of either one) |
| School of Medicine | <ul style="list-style-type: none"> ● Level B1 of TOCFL ● Level 5 of HSK ● Level B1 of CEFR | <ul style="list-style-type: none"> ● Score 500 of TOEFL ITP ● Score 61 of TOEFL iBT ● or equivalent |
| Post-Baccalaureate School of Chinese Medicine | <ul style="list-style-type: none"> ● Level 4 TOCFL ● Level 6 HSK | <ul style="list-style-type: none"> ● Level B1 of CEFR ● Score 47 of TOEFL iBT; ● Score 460 of TOEFL ITP |
| Laboratory Medicine and Biotechnology | <ul style="list-style-type: none"> ● Level A2 of TOCFL ● Level 4 of HSK ● Level A2 of CEFR | not required |

| Tzu Chi University (TCU) | Requirement for Language Proficiency Test Cert. | |
|--------------------------|---|---------------------------------|
| | Chinese (Cert. of either one) | English (Cert. of either one) |
| Public Health | <ul style="list-style-type: none"> ● Level A2 of TOCFL ● Level 4 of HSK ● Level A2 of CEFR | any international standard test |
| Medical Informatics | | not required |
| Nursing | <ul style="list-style-type: none"> ● Level A2 TOCFL ● Level 4 HSK ● Level A2 of CEFR ● previous degree (including high school diploma) taught in Chinese: provide a graduation certificate and relevant Chinese-taught school exam results/or a certificate issued by the school. | any international standard test |

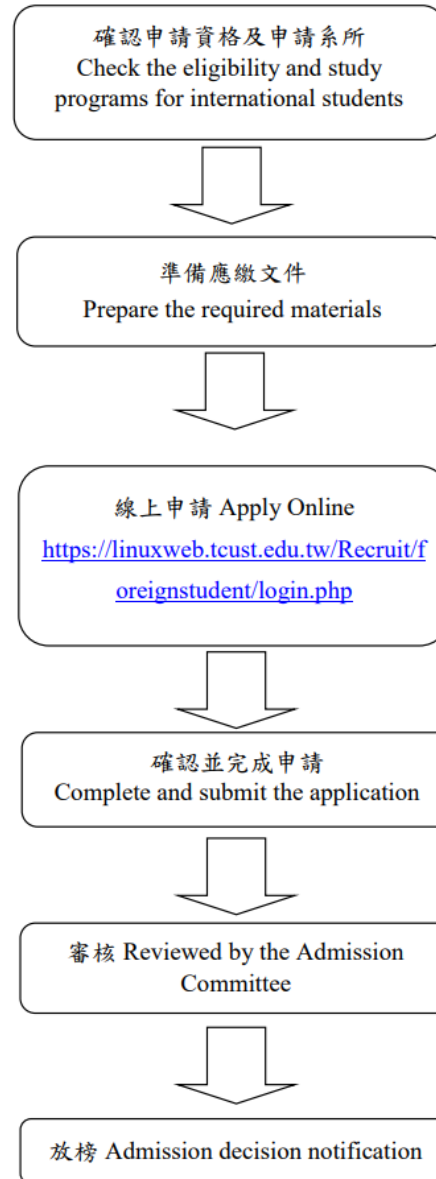
| Tzu Chi University (TCU) | Requirement for Language Proficiency Test Cert. | |
|--------------------------------------|---|---------------------------------|
| | Chinese (Cert. of either one) | English (Cert. of either one) |
| Physical Therapy | <ul style="list-style-type: none"> ● Level A2 of TOCFL ● Level 4 of HSK ● Level A2 of CEFR | any international standard test |
| Biomedical Sciences and Engineering | | not required |
| Molecular Biology and Human Genetics | | not required |

| Tzu Chi University (TCU) | Requirement for Language Proficiency Test Cert. | |
|--------------------------------------|---|-------------------------------|
| | Chinese (Cert. of either one) | English (Cert. of either one) |
| Child Development and Family Studies | <ul style="list-style-type: none"> ● Level A2 of TOCFL ● Level 4 of HSK ● Level A2 of CEFR | not required |
| Social Work | | |
| Human Development and Psychology | | |
| Oriental Languages and Literature | | |

| Dept. | Requirement for Language Proficiency Test Cert. | |
|--|---|---|
| | Chinese (Cert. of either one) | English (Cert. of either one) |
| Foreign Languages and Literatures | | <ul style="list-style-type: none"> ● CEFR Level B1 ● Score 42 of TOEFL iBT ● Score 460 of TOEFL ITP ● IELTS 4 ● or equivalent (such as Dulingo score 70) |
| Bachelor Program in Digital Media and Technology (DMT) | not required | |

| Courses at Jianguo Campus (TCUST) | Requirement for Language Proficiency Test Cert. | |
|---|--|---|
| | Chinese (Cert. of either one) | English (Cert. of either one) |
| Department of Nursing | <ul style="list-style-type: none"> ● TOCFL A2 ● CEFR A2 ● HSK 4 | <ul style="list-style-type: none"> ● CEFR B1 ● TOEIC Bridge with a total score of 84 or higher ● TOEIC with a total score of 550 or higher ● IELTS with a score of 4.5 or higher, ● TOEFL ITP with a total score of 460 or higher ● TOEFL iBT with a total score of 42 or higher, ● Duolingo English Test with a total score of 65 or higher |
| Department of Business Management | | |
| Department of Health Administration | | |
| Department of Information Technology and Management | | |
| Department of Medical Imaging and Radiological Sciences | | |

Application Procedure for International Students



Courses at Jianguo Campus

線上申請 Apply Online

<https://reurl.cc/YVop74>

Courses at Main campus
& Jieren Campus

線上申請 Apply Online

<https://reurl.cc/QeoG10>

Admission Application For International Students

Websites & Guidelines



Courses at
Main
campus &
Jieren
Campus

http://www.enroll.tcu.edu.tw/?page_id=5125



Courses at
Jianguo
Campus

<https://reurl.cc/orV90j>



Chinese
Language
Center

<http://www.language.tcu.edu.t>



Websites of Departments

| Dept. | | |
|---|---|---|
| | Website | Admission Evaluation |
| School of Medicine | https://med.tcu.edu.tw | <ul style="list-style-type: none"> -Written exams in Chemistry and Biology: 50% -Interview for aspects of medical suitability, aptitude, humaneness, and ability to communicate in Mandarin: 30% -Other documents pertinent to the application:20% |
| Post-Baccalaureate School of Chinese Medicine | http://chinesemed.tcu.edu.tw | <ul style="list-style-type: none"> -Chemistry and biology exams:50% -Interview for medical suitability, aptitude, humaneness and ability to communicate in Chinese30% -Other documents pertinent to the application:20% |
| Laboratory Medicine and Biotechnology | https://mtech.tcu.edu.tw | <ul style="list-style-type: none"> -To be determined by the Admissions Committee 1. Autobiography in Chinese 2.High school transcript 3.Chinese Proficiency Test results 4.Other documents pertinent to the application |

| Requirement for Language Proficiency Test Cert. | | |
|---|---|---|
| Dept. | Website | Admission Evaluation |
| Department of Public Health | ● https://ph.tcu.edu.tw/ | To be determined by the Admissions Committee 1. Autobiography in English 2. The Chinese Proficiency Test 3. Students from non-English speaking countries, the English Proficiency Test must be taken within last two years |
| Department of Nursing | ● http://tcunursing.tcu.edu.tw/?page_id=329 | 1. Official high school academic transcript 2. Chinese Proficiency Test results within the last two years 3. English Proficiency Test results within the last two years 4. Autobiography in Chinese and English 5. Proof of membership in student clubs and societies, service certificate(s), and award certificate(s) |
| Department of Medical Informatics | https://mi.tcu.edu.tw/?page_id=359 | Autobiography in Chinese or English High school transcript Other documents pertinent to the application |

| Dept. | Requirement for Language Proficiency Test Cert. | |
|--|---|---|
| | Website | Admission Evaluation |
| Department of Physical Therapy | <ul style="list-style-type: none"> ● https://pt.tcu.edu.tw/ | 2.High school transcript or the transcript in the university for at least 1 year 3. Autobiography in Chinese or English. 4.Chinese proficiency test results within the last two years 6.Other documents pertinent to the application |
| Department of Biomedical Sciences and Engineering | <ul style="list-style-type: none"> ● https://bmse.tcu.edu.tw/ | 1. High school transcript 2.Two letters of recommendation 3.Autobiography in Chinese or English 4.Chinese proficiency test results within the last two years |
| Department of Molecular Biology and Human Genetics | https://imbhg.tcu.edu.tw | 1. High school transcript 2.Autobiography in Chinese or English 3.Chinese proficiency test results: |

| Dept. | Website | Admission Evaluation |
|---|---|---|
| Dept of Child Development and Family Studies | http://www.lovechild.tcu.edu.tw | 1.High school transcript 2.Autobiography in Chinese or English 3.Chinese proficiency test results: |
| Department of Social Work | https://socialwork.tcu.edu.tw | 1.High school transcript 2.Certification of volunteering 3. Certification of service in student association or community 4. Autobiography in Chinese |
| Dept of Human Development and Psychology | http://www.hdd.tcu.edu.tw | 1. High school transcript 2.Autobiography in Chinese or English 3.A letter of recommendation |
| Department of Oriental Languages and Literature | http://www.ol.tcu.edu.tw/ | 1.High school transcript 2.Autobiography in Chinese 3.One letter of recommendation 4.Works, reports in Chinese, honors and award |

| Dept. | Requirement for Language Proficiency Test Cert. | |
|--|--|--|
| | Website | Admission Evaluation |
| Department of Foreign Languages and Literatures | https://ell.tcu.edu.tw/ | 1. Autobiography in English 2. Two Letters of recommendation 3. Study plan in English 4. English proficiency test results: . Level B1 of the Common European Framework of Reference for Language (CEFR); . Score 42 of TOEFL iBT; . Score 460 of TOEFL ITP; or . IELTS 4 |
| Bachelor Program in Digital Media and Technology | https://bpdmt.tcu.edu.tw/ Curriculum of Bachelor Degree in Digital Media and Technology (DMT) (vedio) https://youtu.be/Gg06UjFM8fQ?si=vfqmHNsVDu0ju9-1 | 1. High school diploma 2. High school transcript (including ranking or ranking percentages within class or year group) 3. Autobiography in Chinese or English 4. Reasons for choosing this program, in Chinese or English, and within one page 5. Recommendation letter(s) |

| Dept. | Requirement for Language Proficiency Test Cert. | |
|--|--|--|
| | Website | Admission Evaluation |
| Department of Foreign Languages and Literatures | https://ell.tcu.edu.tw/ | 1. Autobiography in English 2. Two Letters of recommendation 3. Study plan in English 4. English proficiency test results: . Level B1 of the Common European Framework of Reference for Language (CEFR); . Score 42 of TOEFL iBT; . Score 460 of TOEFL ITP; or . IELTS 4 |
| Bachelor Program in Digital Media and Technology | https://bpdmt.tcu.edu.tw/ Curriculum of Bachelor Degree in Digital Media and Technology (DMT) (vedio) https://youtu.be/Gg06UjFM8fQ?si=vfqmHNsVDu0ju9-1 | 1. High school diploma 2. High school transcript (including ranking or ranking percentages within class or year group) 3. Autobiography in Chinese or English 4. Reasons for choosing this program, in Chinese or English, and within one page 5. Recommendation letter(s) |

Bachelor Degree Courses: Admission Criteria

Admission criteria of each department: Bachelor's Program

【1】

| | | |
|-----------------------------------|---|--|
| Department | : School of Medicine | Website: https://med.tcu.edu.tw |
| Language of Instruction | : Chinese | |
| Enrollment Semesters | : Fall 2024 (application deadline: March 4, 2024) | |
| Admission Evaluation | : Documents review; Written exams; Interview | |
| Documents to Be Submitted: | 1.Highest education transcript (including ranking or ranking percentages within class or year group) 2.Autobiography in Chinese 3. Chinese proficiency certificate: (1) Applicants should provide the Chinese proficiency test report and meet one of the requirements listed below: ● Level B1 of the Test of Chinese as a Foreign Language (TOCFL); ● Level 5 of the Chinese Proficiency Test (HSK); or ●Level B1 of the Common European Framework of Reference for Language (CEFR). 4.English proficiency certificate: (1) Applicants should provide the English proficiency test report and meet one of the requirements listed below: ● Score 500 of TOEFL ITP; ● Score 61 of TOEFL iBT; or ● Score satisfactorily from another equivalent test. (2) The test must meet international or their governmental standards. | |

Admission criteria of each department: Bachelor's Program

【1】 continued

Evaluation Criteria :

- Qualified candidates must come to TCU to take the following exams:
 1. Mandarin Chinese language test. Results of the Chinese language test will not be included in the final score. However, test scores of prospective students must satisfy the minimum requirement of the test.
 2. Written exams in chemistry and biology.
 3. Interview for aspects of medical suitability, aptitude, humaneness, and ability to communicate in Mandarin Chinese.
- Evaluation Criteria:
 4. Written exams: 50%
 5. Interviews: 30%
 6. Other documents pertinent to the application: 20%

Remarks

1. Academic qualifications:
 - (1) Applicants should have high school qualifications equivalent to Taiwanese senior high school graduates (6 years' high school education)
 3. Mandarin Chinese is the language used in classes and exams in the medical school.

Admission criteria of each department: Bachelor's Program

【2】

| | |
|--|---|
| Department | : Post-Baccalaureate School of Chinese Medicine |
| Website | : https://chinesemed.tcu.edu.tw/ |
| Language of Instruction | : Chinese |
| Enrollment Semesters | : Fall 2024 (application deadline: March 4, 2024) |
| Admission Evaluation | : Documents review ; Paper-based exams; Interview |
| Documents to Be Submitted: <ul style="list-style-type: none">1. Chinese proficiency test results:<ul style="list-style-type: none">● Level 4 of the Test of Chinese as a Foreign Language (TOCFL);● Level 6 of the Chinese Proficiency Test (HSK)1. English proficiency test results<ul style="list-style-type: none">● Level B1 of the Common European Framework of Reference for Language (CEFR);→ Score 47 of TOEFL iBT; Score 460 of TOEFL ITP1. A study plan must be written in Chinese and in applicant's handwriting, to include learning motivation, expected length of study and future plan(s), and should be submitted along with application package. | |

Admission criteria of each department: Bachelor's Program

【2】 continued

Evaluation Criteria :

1. Exams: 50%
2. Interviews: 30%
3. Other documents pertinent to the application: 20%

※Tzu Chi University Post-Baccalaureate School of Chinese Medicine review panel determines the minimal admission fraction.

1. The applicant should have a bachelor's degree.
2. No admission will be granted if minimum requirements are not met.
3. Prospective students with the same overall scores will be admitted, according to their exam scores in biology.

Remarks

An applicant, who has graduated from the Department of Medicine of any overseas university, which is approved by the Ministry of Education in Taiwan, and possesses a medical license in that country, may apply to be exempted from the Western Medicine curriculum. Credits attained prior to admission must be submitted with the application and further evaluated by the departmental committee before transfer of credits. Transfer of credits from other universities shall be handled according to the credit-transfer regulations of TCU.

Admission criteria of each department: Bachelor's Program

【3】

Department : Department of Laboratory Medicine and Biotechnology
Website : <https://mtech.tcu.edu.tw/>

Language of Instruction : Chinese

Enrollment Semesters : Fall 2024 (**application deadline: March 4, 2024**)

Admission Evaluation : Documents review

Documents to Be Submitted:

1. High school transcript
2. Autobiography in Chinese
3. The Chinese Proficiency Test must be taken within the last two years, and the score meets the international or their governmental standard:
 - Level A2 of the Test of Chinese as a Foreign Language (TOCFL);
 - Level 4 of the Chinese Proficiency Test (HSK); or
 - Level A2 of the Common European Framework of Reference for Language (CEFR).
1. Other documents pertinent to the application

Evaluation Criteria :

To be determined by the Admissions Committee

Admission criteria of each department: Bachelor's Program

【4】

| | | |
|---|--|---|
| Department | : Department of Public Health | Website : https://ph.tcu.edu.tw/ |
| Language of Instruction | : Chinese | |
| Enrollment Semesters | : Fall 2024 (application deadline: March 4, 2024) | |
| Admission Evaluation | : Documents review | |
| Documents to Be Submitted: <ol style="list-style-type: none">1. Autobiography in English2. The Chinese Proficiency Test must be taken within the last two years, and the score meets the international or their governmental standard:<ul style="list-style-type: none">● Level A2 of the Test of Chinese as a Foreign Language (TOCFL);● Level 4 of the Chinese Proficiency Test (HSK); or● Level A2 of the Common European Framework of Reference for Language (CEFR).1. The English Proficiency Test must be taken within last two years, and the score meets the international or their governmental standard. | | |
| Evaluation Criteria: <p>To be determined by the Admissions Committee</p> | | |

Admission criteria of each department: Bachelor's Program

【5】

| | | |
|-----------------------------------|---|---|
| Department | : Department of Nursing | Website : http://tcunursing.tcu.edu.tw/ |
| Language of Instruction | : Chinese | |
| Enrollment Semesters | : Fall 2024 (application deadline: March 4, 2024) | |
| Admission Evaluation | : Documents review | |
| Documents to Be Submitted: | <ol style="list-style-type: none">1. Official high school academic transcript2. Proof of Chinese Proficiency (one of following):<ol style="list-style-type: none">(1) Level A2 or above of TOCFL (within the last two years)(2) Level 4 or above of HSK (within the last two years)(3) Level A2 or above of CEFR (within the last two years)(4) Certificate of degree/enrollment in Chinese high school3. English Proficiency Test results within the last two years4. Autobiography in Chinese and English5. Proof of membership in student clubs and societies, service certificate(s), and award certificate(s) | |
| Evaluation Criteria: | To be determined by the Admissions Committee | |

Admission criteria of each department: Bachelor's Program

【5】 continued

Remarks

This program is in the field of healthcare, involving direct interaction with people. Students are required to have a strong foundation in medical knowledge, nursing skills, and a sense of humanity. Throughout their studies, students will engage in hospital internships to learn nursing skills, the use of specialized medical equipment, communication with patients and healthcare teams, and the establishment of nurse-patient relationships. They will be responsible for identifying health problems in patients and must be highly observant. Therefore, students need to have good visual and auditory abilities, strong verbal communication skills, the ability to stand for extended periods, operate medical instruments, move quickly, excel in interpersonal communication and coordination, manage their emotions, and possess strong resilience. These skills will prepare students for careers in patient care after graduation.

Admission criteria of each department: Bachelor's Program

【6】

| | | |
|-----------------------------------|---|---|
| Department | : Department of Medical Informatics | Website : https://mi.tcu.edu.tw/?page_id=359 |
| Language of Instruction | : Chinese | |
| Enrollment Semesters | : Fall 2024 (application deadline: March 4, 2024) | |
| Admission Evaluation | : Documents review | |
| Documents to Be Submitted: | <ol style="list-style-type: none">1. High school transcript2. Autobiography in Chinese or English3. Chinese Proficiency Test results:<ul style="list-style-type: none">● Level A2 of the Test of Chinese as a Foreign Language (TOCFL);● Level 4 of the Chinese Proficiency Test (HSK); or● Level A2 of the Common European Framework of Reference for Language (CEFR).1. Other documents pertinent to the application | |
| Evaluation Criteria: | To be determined by the Admissions Committee | |

Admission criteria of each department: Bachelor's Program

【7】

| | | |
|-----------------------------------|--|---|
| Department | : Department of Physical Therapy | Website : https://pt.tcu.edu.tw/ |
| Language of Instruction | : Chinese | |
| Enrollment Semesters | : Fall 2024 (application deadline: March 4, 2024) | |
| Admission Evaluation | : Documents review | |
| Documents to Be Submitted: | <ol style="list-style-type: none">1. High school qualifications equivalent to Taiwanese senior high school graduates (6 years' high school education), or have completed pre-university studies for at least 1 year2. High school transcript or the transcript in the university for at least 1 year3. Autobiography in Chinese or English. (Introduction of yourself, motivation of study, and the plan of future study should be included)4. Chinese proficiency test results within the last two years:<ul style="list-style-type: none">● Level A2 of the Test of Chinese as a Foreign Language (TOCFL);● Level 4 of the Chinese Proficiency Test (HSK); or .● Level A2 of the Common European Framework of Reference for Language (CEFR).1. English proficiency test results within the last two years, and the test must meet international or their governmental standards.2. Other documents pertinent to the application | |

Admission criteria of each department: Bachelor's Program

【7】 continued

Evaluation Criteria :

To be determined by the Admissions Committee

Remarks

1. An online or phone interview may be arranged if necessary.

Admission criteria of each department: Bachelor's Program

【8】

Department : Department of Biomedical Sciences and Engineering Website
: <https://bmse.tcu.edu.tw/>

Language of Instruction : Chinese

Enrollment Semesters : Fall 2024 (**application deadline: March 4, 2024**)

Admission Evaluation : Documents review

Documents to Be Submitted:

1. High school transcript
2. Two letters of recommendation
3. Autobiography in Chinese or English
4. Chinese proficiency test results within the last two years: .
 - Level A2 of the Test of Chinese as a Foreign Language (TOCFL);
 - Level 4 of the Chinese Proficiency Test (HSK); or
 - Level A2 of the Common European Framework of Reference for Language (CEFR).

Evaluation Criteria:

To be determined by the Admissions Committee

Admission criteria of each department: Bachelor's Program

【9】

Department : Department of Molecular Biology and Human Genetics
Website : <https://imbhg.tcu.edu.tw>

Language of Instruction : Chinese

Enrollment Semesters : Fall 2024 (**application deadline: March 4, 2024**)

Admission Evaluation : Documents review

Documents to Be Submitted:

1. High school transcript
2. Autobiography in Chinese or English
3. Chinese proficiency test results:
 - At least at Level A2 of the Test of Chinese as a Foreign Language (TOCFL); or
 - At least at Level 4 of the Chinese Proficiency Test (HSK); or
 - At least at Level A2 of the Common European Framework of Reference for Language (CEFR).

Evaluation Criteria:

To be determined by the Admissions Committee

Admission criteria of each department: Bachelor's Program

【10】

Department : Department of Child Development and Family Studies Website
: <https://lovechild.tcu.edu.tw/>

Language of Instruction : Chinese

Enrollment Semesters : Fall 2024 (**application deadline: March 4, 2024**)

Admission Evaluation : Documents review

Documents to Be Submitted:

1. High school transcript
2. Autobiography and study plan in Chinese or English
3. Two letters of recommendation
4. Other documents pertinent to the application
5. Chinese proficiency test results: .
 - Level A2 of the Test of Chinese as a Foreign Language (TOCFL);
 - Level 4 of the Chinese Proficiency Test (HSK); or
 - Level A2 of the Common European Framework of Reference for Language (CEFR)

Evaluation Criteria:

To be determined by the Admissions Committee

Admission criteria of each department: Bachelor's Program

【11】

Department : Department of Social Work
Website : <https://socialwork.tcu.edu.tw>

Language of Instruction : Chinese

Enrollment Semesters : Fall 2024 (**application deadline: March 4, 2024**)

Admission Evaluation : Documents review

Documents to Be Submitted:

1. High school transcript
2. Autobiography in Chinese
3. Chinese proficiency test results:
 - Level A2 of the Test of Chinese as a Foreign Language (TOCFL);
 - Level 4 of the Chinese Proficiency Test (HSK); or
 - Level A2 of the Common European Framework of Reference for Language (CEFR)
1. Other documents pertinent to the application:
 - For example, work experience or evidence of involvement in social work-related services.

Evaluation Criteria:

To be determined by the Admissions Committee

Admission criteria of each department: Bachelor's Program

【12】

Department : Department of Human Development and Psychology Website
: <https://hdd.tcu.edu.tw/>

Language of Instruction : Chinese

Enrollment Semesters : Fall 2024 (**application deadline: March 4, 2024**)

Admission Evaluation : Documents review

Documents to Be Submitted:

1. High school transcript
2. Autobiography in Chinese or English
3. A letter of recommendation
4. Chinese Proficiency Test results:
 - Level A2 of the Test of Chinese as a Foreign Language (TOCFL);
 - Level 4 of the Chinese Proficiency Test (HSK); or
 - Level A2 of the Common European Framework of Reference for Language (CEFR)
1. Other documents pertinent to the application (including proof of participation in extracurricular activities)

Evaluation Criteria:

To be determined by the Admissions Committee

Admission criteria of each department: Bachelor's Program

【13】

Department : Department of Oriental Languages and Literature
Website : <https://ol.tcu.edu.tw/>

Language of Instruction : Chinese

Enrollment Semesters : Fall 2024 (**application deadline: March 4, 2024**)

Admission Evaluation : Documents review

Documents to Be Submitted:

1. High school transcript
2. Autobiography in Chinese
3. One letter of recommendation
4. Other documents pertinent to the application: Works, reports in Chinese, honors and award
5. Chinese Proficiency Test results: .
 - Level A2 of the Test of Chinese as a Foreign Language (TOCFL);
 - Level 4 of the Chinese Proficiency Test (HSK); or
 - Level A2 of the Common European Framework of Reference for Language (CEFR)

Evaluation Criteria:

To be determined by the Admissions Committee

Admission criteria of each department: Bachelor's Program

【14】

Department : Department of Foreign Languages and Literatures Website
: <https://ell.tcu.edu.tw/>

Language of Instruction : English

Enrollment Semesters : Fall 2024 (**application deadline: March 4, 2024**)

Admission Evaluation : Documents review

Documents to Be Submitted:

1. High school transcript
2. Autobiography in English
3. Two Letters of recommendation
4. Study plan in English 5. English proficiency test results:
 - Minimum CEFR Level required : B1 ;
 - Score 42 of TOEFL iBT;
 - Score 460 of TOEFL ITP; or
 - IELTS 4.

Evaluation Criteria:

To be determined by the Admissions Committee

Remarks :

An online or phone interview may be arranged if necessary.

Admission criteria of each department: Bachelor's Program

【15】

| | | |
|---|---|---|
| Department | : Department of Digital Media and Technology | Website : https://bpdmt.tcu.edu.tw/ |
| Language of Instruction | : English | |
| Enrollment Semesters | : Fall 2024 (application deadline: March 4, 2024) | |
| Admission Evaluation | : Documents review; An online or phone interview may be arranged if necessary | |
| Documents to Be Submitted: | | |
| 1. Certificate of Enrollment and high school diploma | | |
| 2. High school transcript (including ranking or ranking percentages within class or year group) | | |
| 3. Autobiography in English (covering self-introduction, education background, application motivation, future plans, and personal photos) | | |
| 4. Study Plan in English | | |
| 5. Recommendation letter(s) | | |
| 6. English Proficiency Document(s) or Certificate : | | |
| ● Level B1 of the Common European Framework of Reference for Language (CEFR); . or | | |
| ● Score 42 of TOEFL iBT; . or | | |
| ● Score 460 of TOEFL ITP; . or | | |
| ● IELTS 4. . | | |
| ★ If not, the applicants may also provide an English proficiency document or certificate signed by the school or government agency. | | |
| 7. Other documents pertinent to the application | | |

Admission criteria of each department: Bachelor's Program

【15】 continued

Evaluation Criteria :

Means of screening is mainly based on application materials review. To be determined by the Admissions Committee.

*Master Degree Courses:
Admission Criteria*

Admission criteria of each department: Master's Program

【1】

Department : Master's Program in Pharmacology and Toxicology, School of Medicine
Website : <https://toxicology.tcu.edu.tw/>

Language of Instruction : English

Enrollment Semesters : Fall 2024 & Spring 2025

Admission Evaluation : Documents review

Documents to Be Submitted:

1. Autobiography and research proposal
2. English Proficiency Test results which meet the international or their governmental standard. English Proficiency Test results:
 - Level B1 of the Common European Framework of Reference for Language (CEFR);
 - Score 42 of TOEFL iBT;
 - Score 460 of TOEFL ITP; or
 - IELTS 4.
3. Other documents pertinent to the application

Admission criteria of each department: Master's Program

【1】 continued

Evaluation Criteria

- To be determined by the Admissions Committee

Remarks

1. Applicants must have taken biology-related subjects.
2. Full English courses of the International Biomedical Graduate Program (IBGP) are available.

Admission criteria of each department: Master's Program

【2】

Department : Master's Program in Biomedical Sciences, School of Medicine
Website : <https://mpbms.tcu.edu.tw/>

Language of Instruction : English

Enrollment Semesters : Fall 2024 & Spring 2025

Admission Evaluation : Documents review

Documents to Be Submitted:

1. Transcripts of highest education including the ranking in Chinese or English
2. Autobiography in Chinese or English
3. Certificate of the international or national English Proficiency Tests in last 2 years.

Criteria for English Proficiency Test:

- The Common European Framework of Reference for Language (CEFR): Above or equal to Level B1;
 - TOEFL iBT: Above or equal to 42;
 - TOEFL ITP: Above or equal to 460
 - IELTS: Above or equal to 4. (For those who provide a non-international English proficiency test certificate, it is necessary for the applicants to provide the correspondence between the test results and the international English proficiency test standards, and reach the criteria listed above.)
4. Other supporting documents (such as laboratory experience) that will be helpful in the evaluation process.

Admission criteria of each department: Master's Program

【2】 continued

Evaluation Criteria

- To be determined by the Admissions Committee of Master Program.

Remarks

1. International students, who majored in biological sciences and graduated from a college or university approved by the Ministry of Education of the R.O.C., are eligible to apply for admission.
2. Applicants must have taken biology-related subjects.
3. Full English courses of the International Postgraduate Program for Biomedical Researches (IPPBR) are available.

Admission criteria of each department: Master's Program

【3】

Department : Department of Laboratory Medicine and Biotechnology
Website : <https://mtech.tcu.edu.tw/>

Language of Instruction : Chinese

Enrollment Semesters : Fall 2024 & Spring 2025

Admission Evaluation : Documents review

Documents to Be Submitted:

1. Transcripts and /or GPA
2. Autobiography in Chinese or English
3. Other documents pertinent to the application(such as laboratory experience) that will be helpful in the evaluation process
4. For the international applicant whose native language is not English, the English Proficiency Test must have been taken within the last two years, and meet the international or their governmental standard:
 - Level B1 of the Common European Framework of Reference for Language (CEFR);
 - Score 42 of TOEFL iBT;
 - Score 460 of TOEFL ITP; or
 - IELTS 4

Admission criteria of each department: Master's Program

【3】 continued

Documents to Be Submitted:

5. Chinese Proficiency Test results: . Level A2 of the Test of Chinese as a Foreign Language (TOCFL);
 - Level 4 of the Chinese Proficiency Test (HSK); or
 - Level A2 of the Common European Framework of Reference for Language (CEFR)

Evaluation Criteria

- To be determined by the Master's Program Admissions Committee.

Remarks

Full English courses of the International Biomedical Graduate Program (IBGP) are available.

Admission criteria of each department: Master's Program

【4】

Department : Department of Public Health
Website : <https://ph.tcu.edu.tw/>

Language of Instruction : English

Enrollment Semesters : Fall 2024 & Spring 2025

Admission Evaluation : Documents review

Documents to Be Submitted:

1. Autobiography in English
2. The Chinese Proficiency Test must have been taken within last two years, and the score meets the international or their governmental standard
3. The English Proficiency Test must have been taken within last two years, and the score meets the international or their governmental standard:
 - Level B1 of the Common European Framework of Reference for Language (CEFR);
 - Score 42 of TOEFL iBT;
 - Score 460 of TOEFL ITP; or
 - IELTS 4.
1. Research Plan /Study Plan

Admission criteria of each department: Master's Program

【4】 continued

Evaluation Criteria

- To be determined by the Admissions Committee.

Remarks

Full English courses of the International Biomedical Graduate Program (IBGP) are available.

Admission criteria of each department: Master's Program

【5】

Department : Department of Nursing
Website : <http://tcunursing.tcu.edu.tw/>

Language of Instruction : Chinese

Enrollment Semesters : Fall 2024 & Spring 2025

Admission Evaluation : Documents review

Documents to Be Submitted:

1. Undergraduate transcripts and /or GPA
2. Autobiography in Chinese or English
3. Chinese Proficiency Test results:
 - Level A2 of the Test of Chinese as a Foreign Language (TOCFL);
 - Level 4 of the Chinese Proficiency Test (HSK); or
 - Level A2 of the Common European Framework of Reference for Language (CEFR).
1. Research Plan /Study Plan

Evaluation Criteria

To be determined by the Admissions Committee.

Admission criteria of each department: Master's Program

【6】

Department : Department of Medical Informatics
Website : <http://tcunursing.tcu.edu.tw/>

Language of Instruction : Chinese

Enrollment Semesters : Fall 2024 & Spring 2025

Admission Evaluation : Documents review

Documents to Be Submitted:

1. Undergraduate transcripts and /or GPA
2. Autobiography in Chinese or English
3. Chinese Proficiency Test results:
 - Level A2 of the Test of Chinese as a Foreign Language (TOCFL);
 - Level 4 of the Chinese Proficiency Test (HSK); or
 - Level A2 of the Common European Framework of Reference for Language (CEFR).
1. Research Plan /Study Plan

Evaluation Criteria

To be determined by the Admissions Committee.

Admission criteria of each department: Master's Program

【7】

Department : Department of Physical Therapy
Website : <https://pt.tcu.edu.tw>

Language of Instruction : Chinese

Enrollment Semesters : Fall 2024

Admission Evaluation : Documents review

Documents to Be Submitted:

1. Certificate of Bachelor degree
2. Transcripts and / or GPA
3. Autobiography in Chinese or English. (Introduction of yourself, motivation of study, and the experience in research should be included)
4. Research proposal
5. Letters of recommendation

Admission criteria of each department: Master's Program

【7】 continued

Documents to Be Submitted:

6. Chinese proficiency test results within 2 years. Test of Chinese as a Foreign Language (TOCFL) or other equivalent certificate for Chinese: . Level A2 of the Test of Chinese as a Foreign Language (TOCFL); . Level 4 of the Chinese Proficiency Test (HSK); or . Level A2 of the Common European Framework of Reference for Language (CEFR).
7. Other documents pertinent to the application

Evaluation Criteria

- To be determined by the Master's Program Admissions Committee.

Remarks

An online or phone interview may be arranged if necessary.

Admission criteria of each department: Master's Program

【8】

Department : Department of Biomedical Sciences and Engineering
Website : <https://bmse.tcu.edu.tw/>

Language of Instruction : Chinese

Enrollment Semesters : Fall 2024 & Spring 2025

Admission Evaluation : Documents review

Documents to Be Submitted:

1. Undergraduate GPA
2. Two letters of recommendation
3. Autobiography in Chinese or English
4. Must list three faculty members' names, in this Department, whom you think you are interested to join. Please indicate the preferential order. Those who do not submit this document will not meet the application threshold.
5. Chinese proficiency test results within the last two years:
 - Level A2 of the Test of Chinese as a Foreign Language (TOCFL);
 - Level 4 of the Chinese Proficiency Test (HSK); or
 - Level A2 of the Common European Framework of Reference for Language (CEFR)

Admission criteria of each department: Master's Program

【8】 continued

Evaluation Criteria

- To be determined by the Admissions Committee

Remarks

Full English courses of the International Biomedical Graduate Program (IBGP) are available.

Admission criteria of each department: Master's Program

【9】

Department : Department of Molecular Biology and Human Genetics
Website : <https://imbhg.tcu.edu.tw>

Language of Instruction : Chinese

Enrollment Semesters : Fall 2024

Admission Evaluation : Documents review

Documents to Be Submitted:

1. Transcripts or undergraduate GPA
2. Two letters of recommendation
3. Autobiography in English
4. Description of research interests and research proposal
5. Must list three faculty members' names, in this Department, whom you think you are interested to join. Please indicate the preferential order. Those who do not submit this document will not meet the application threshold.
6. English Proficiency Test results:
 - At least at Level B1 of the Common European Framework of Reference for Language (CEFR); or
 - At least at Score 42 of TOEFL iBT; or
 - At least at Score 460 of TOEFL ITP; or
 - At least at IELTS 4.

Admission criteria of each department: Master's Program

【9】 continued

Evaluation Criteria

- To be determined by the Admissions Committee.

Remarks

1. Course prerequisites: General Biology, and one of the following courses: Biochemistry or Molecular Biology or Genetics.
2. Full English courses of the International Postgraduate Program for Biomedical Researches (IPPBR) are available.

Admission criteria of each department: Master's Program

【10】

Department : Institute of Education
Website : <https://education.tcu.edu.tw/>

Language of Instruction : Chinese

Enrollment Semesters : Fall 2024 & Spring 2025

Admission Evaluation : Documents review

Documents to Be Submitted:

1. Autobiography in Chinese or English
2. Study plan in Chinese or English
3. Undergraduate transcript (GPA)
4. Copy of undergraduate degree
5. Other documents pertinent to the application
6. Chinese proficiency test results:
 - Level A2 of the Test of Chinese as a Foreign Language (TOCFL);
 - Level 4 of the Chinese Proficiency Test (HSK); or
 - Level A2 of the Common European Framework of Reference for Language (CEFR).

Evaluation Criteria

To be determined by the Admissions Committee.

Admission criteria of each department: Master's Program

【11】

Department : Department of Social Work
Website : <https://socialwork.tcu.edu.tw>

Language of Instruction : Chinese

Enrollment Semesters : Fall 2024 & Spring 2025

Admission Evaluation : Documents review

Documents to Be Submitted:

1. School transcript
2. Autobiography in Chinese
3. Chinese proficiency test results:
 - Level A2 of the Test of Chinese as a Foreign Language (TOCFL);
 - Level 4 of the Chinese Proficiency Test (HSK); or
 - Level A2 of the Common European Framework of Reference for Language (CEFR)
1. Other documents pertinent to the application: For example, work experience or evidence of involvement in social work-related services.

Evaluation Criteria

To be determined by the Admissions Committee.

Admission criteria of each department: Master's Program

【12】

Department : Division of Clinical Psychology, Department of Human Development and Psychology
Website : <https://hdd.tcu.edu.tw/>

Language of Instruction : Chinese

Enrollment Semesters : Fall 2024

Admission Evaluation : Documents review

Documents to Be Submitted:

1. Autobiography in Chinese or English (including description or certification of Chinese ability)
2. Study plan in Chinese or English
3. Transcripts and /or GPA
4. A Letter of recommendation
5. Other documents pertinent to application (e.g., certification of workshops attendance or proof of research experience)
6. Chinese proficiency test results:
 - Level A2 of the Test of Chinese as a Foreign Language (TOCFL);
 - Level 4 of the Chinese Proficiency Test (HSK); or
 - Level A2 of the Common European Framework of Reference for Language (CEFR).

Evaluation Criteria

- To be determined by the Admissions Committee.

Admission criteria of each department: Master's Program

【13】

| | |
|-------------------|--|
| Department | : Division of Applied Anthropology, Department of Human Development and Psychology |
| Website | : https://hdd.tcu.edu.tw/ |

Language of Instruction : Chinese

Enrollment Semesters : Fall 2024

Admission Evaluation : Documents review

Documents to Be Submitted:

1. School transcript
2. Autobiography in Chinese
3. Chinese proficiency test results:
 - Level A2 of the Test of Chinese as a Foreign Language (TOCFL);
 - Level 4 of the Chinese Proficiency Test (HSK); or
 - Level A2 of the Common European Framework of Reference for Language (CEFR)
1. Other documents pertinent to the application: For example, work experience or evidence of involvement in social work-related services.

Evaluation Criteria

- To be determined by the Admissions Committee.

Admission criteria of each department: Master's Program

【14】

Department : Department of Oriental Languages and Literature
Website : <https://ol.tcu.edu.tw/>

Language of Instruction : Chinese

Enrollment Semesters : Fall 2024& Spring 2025

Admission Evaluation : Documents review

Documents to Be Submitted:

1. Autobiography in Chinese
2. Study plan in Chinese or Japanese
3. Other documents pertinent to the application
4. Chinese proficiency test results:
 - Level A2 of the Test of Chinese as a Foreign Language (TOCFL);
 - Level 4 of the Chinese Proficiency Test (HSK); or
 - Level A2 of the Common European Framework of Reference for Language (CEFR).

Admission criteria of each department: Master's Program

【14】 continued

Evaluation Criteria

- To be determined by the Admissions Committee.

Remarks

Proficiency in Chinese (reading, writing, listening, and speaking)

Admission criteria of each department: Master's Program

【15】

Department : Institute of Religion and Humanities
Website : <https://religion.tcu.edu.tw/>

Language of Instruction : Chinese

Enrollment Semesters : Fall 2024 & Spring 2025

Admission Evaluation : Documents review

Documents to Be Submitted:

1. Bachelor's degree
2. Undergraduate transcript
3. Autobiography (including description or certification of Chinese ability)
4. Study plan
5. Other relevant documents
6. Chinese proficiency test results:
 - Level A2 of the Test of Chinese as a Foreign Language (TOCFL);
 - Level 4 of the Chinese Proficiency Test (HSK); or
 - Level A2 of the Common European Framework of Reference for Language (CEFR).
1. English Proficiency documentation

Admission criteria of each department: Master's Program

【15】 continued

Evaluation Criteria

- To be determined by the Admissions Committee.

Remarks

An online or phone interview may be arranged if necessary.

Admission criteria of each department: Master's Program

【16】

Department : Master Program in Sustainability and Disaster Management
Website : <https://mpsdm.tcu.edu.tw/>

Language of Instruction : Chinese

Enrollment Semesters : Fall 2024

Admission Evaluation : Documents review

Documents to Be Submitted:

1. Transcripts and /or GPA
2. Study plan in Chinese or English
3. Autobiography in Chinese or English (including description or certification of Chinese ability)
4. A Letter of recommendation
5. Other documents pertinent to application (e.g., certification of workshops attendance or proof of research experience)
6. Chinese proficiency test results:
 - Level A2 of the Test of Chinese as a Foreign Language (TOCFL);
 - Level 4 of the Chinese Proficiency Test (HSK); or
 - Level A2 of the Common European Framework of Reference for Language (CEFR)

Evaluation Criteria

To be determined by the Admissions Committee.

*Ph.D. Courses:
Admission Criteria*

Admission criteria of each department: Ph.D. Program

【1】

Department : Institute of Medical Sciences
Website : <https://gims.tcu.edu.tw/>

Language of Instruction : English

Enrollment Semesters : Fall 2024 & Spring 2025

Admission Evaluation : Documents review

Documents to Be Submitted:

1. Transcripts and /or GPA
2. Autobiography
3. Study plan
4. Two letters of recommendation
5. Applicants whose native language is not English must provide proof of English language proficiency within the past two years:
 - Level B1 of the Common European Framework of Reference for Language (CEFR);
 - Score 42 of TOEFL iBT;
 - Score 460 of TOEFL ITP; or
 - IELTS 4.

Evaluation Criteria

To be determined by the Admissions Committee.

Admission criteria of each department: Ph.D. Program

【1】 continued

Remarks

1. Before graduation, students must complete one English Proficiency test, such as:
 - TOEFL, iBT (71), or IELTS (5.5).
 - This requirement does not apply to students from English-speaking countries.
1. Course prerequisites:
 - (1) General Biology, and
 - (2) Molecular Biology, Biochemistry, or Chemistry.
2. Full English courses of the International Biomedical Graduate Program (IBGP) are available.
3. An online or phone interview may be arranged if necessary.

Admission criteria of each department: Ph.D. Program

【2】

Department : Pharmacology and Toxicology, School of Medicine
Website : <https://toxicology.tcu.edu.tw/>

Language of Instruction : English

Enrollment Semesters : Fall 2024 & Spring 2025

Admission Evaluation : Documents review

Documents to Be Submitted:

1. Autobiography
 2. Research proposal
 3. English Proficiency Test results which meet the international or their governmental standard:
 - Level B1 of the Common European Framework of Reference for Language (CEFR);
 - Score 42 of TOEFL iBT;
 - Score 460 of TOEFL ITP; or
 - IELTS 4. 4.
- ★ Other documents pertinent to the application

Evaluation Criteria:

To be determined by the Admissions Committee.

Admission criteria of each department: Ph.D. Program

【2】 continued

Remarks

1. Applicants must have taken biology-related subjects.
2. Full English courses of the International Biomedical Graduate Program (IBGP) are available.



Tzu Chi University

Thank You!